

**Global Security and Safety Leaders to Converge On Dubai in January**  
**Steep Rise of 60% in the Rate of Booking for Intersec Middle East**

**I**ntersec Middle East has attracted involvement by key security, policing, safety and fire & rescue solution providers, reflecting a remarkable growth rate of more than 60% as compared to the booking rate for the exhibition in July 2007. The annual trade fair and conference is recognised as the ideal regional platform for debating and providing solutions for security, fire, police health and safety concerns which set international standards for monitoring commercial developments.

Organised by Messe Frankfurt, the world's second largest exhibition organiser, Intersec Middle East is scheduled to take place from the 13-15 January 2008 at the Dubai International Convention & Exhibition Centre in the United Arab Emirates.

Ines Gruslinger, the show manager of the event proclaims that, "Intersec Middle East in 2007 attracted over 16,000 visitors from 79 countries, and 98% of the exhibitors stated that their overall objectives in terms of establishing contacts for future sales had been met or surpassed. The 10th edition of this prestigious networking event will present an ideal opportunity for industry related companies to showcase to a global audience of commercial and government buyers, launch new products, source distribution and business partners, and reinforce existing business relationships."

Over the past eight years \$277 billion has been allocated to defence and security in the GCC and the projected growth of the security systems and equipment market, especially for safety, within the UAE is estimated to be 25% per year over the next five years.

Lt. Col. Aqil Mustafa Al-Jenahi, Director of the Mechanical & Technical Dept., Dubai Police HQ, General Department of Operations, cited that "The Dubai Police HQ has been supporting Intersec Middle East for years and regards the show as a very important source for Police & Homeland Security equipment in the region. The Dubai Police also organized outside demonstrations for the first time at Intersec Middle East in 2007 and used the show as a platform to show its services to the Intersec visitors, media and specialized audiences."

Intersec Middle East in 2008 will broadly cover four exhibiting areas, enabling exhibitors to meet with visitors most relevant to their interests. It will incorporate the sectors of Commercial Security Middle



*Brigadier Rashid Thani Al Matrooshi, Head of Dubai Civil Defence liaising in Intersec Middle East 2007*

East, Fire & Rescue Middle East, Safety & Health Middle East, and Homeland Security & Policing Middle East.

One of the most popular aspects of Intersec Middle East in 2007 was the comprehensive conference program featuring 44 experts, from the four exhibition sectors, drawn from the international and Middle East government level. The 2008 event will host three separate simultaneous conferences, addressing Security and Police Forces; Civil Defence and Fire Brigades, Occupational Safety & Health organizations and Security professionals across the region. For the second year, the Intersec Middle East Safety & Health Conference will be jointly organized with the Institution of Occupational Safety and Health (IOSH), Europe's largest professional body for safety and health professionals.

Intersec Middle East will also feature outdoor demonstration areas in association with the UAE Ministry of Interior's Dubai Department of Civil Defence and the Dubai Police. Visitors to the exhibition will get an insight into current police, fire and rescue work techniques and best practices.

According to the official reports, "The need

for certifying standards is looked at in greater detail, in Intersec, the Middle East's leading exhibition on fire, security, safety and health. The exhibition in 2007 attracted more than 630 companies from 49 countries, representing a 54% growth on the previous year. And while improvements to on-site practices have been made in the last 12 months and innovations in fire-resistant products have reached the market, news that next year's event is set to be double in size, illustrates that there is growing awareness of the need for 'quality' in the region."

Eckhard Pruy, CEO of Messe Frankfurt Middle East, states that "It is encouraging to know that Intersec Middle East is the frontrunner for all the fire, police & homeland security, commercial security, safety & health events that are held in the region. The event follows international best practices, and is key to keeping the region up to date with the changing technologies, solutions, best practices and regulations in the sectors. The derived statistics for Intersec in 2008, seven months prior to the event, speaks volumes and establishes that the advancements in Intersec complements the innovations of this promising industry."

**Intersec Middle East**

**Dubai International Convention and Exhibition Centre, UAE. January 13th -15th, 2008**

Messe Frankfurt Middle East

Tel: +971 4 338 0102 Fax: +971 4 339 0280

Email: [swarn.kaur@uae.messefrankfurt.com](mailto:swarn.kaur@uae.messefrankfurt.com) Website: [www.intersecexpo.com](http://www.intersecexpo.com)

## INTERSEC MIDDLE EAST 2008

Conference Programme 13th, 14th and 15th January 2008

### intersec MIDDLE EAST

#### Sunday 13th January - Keynote Sessions

“ Making For A Safer Society - the Global Overview”

Chairman: Neil Wallington,  
Conference Director, Messe Frankfurt Middle East

#### Welcome

HE Lieutenant General Dhahi Khalfan Tamin, Commander  
in Chief, Dubai Police

Aiming For A Stable World –  
The International Political Dimension

International Politician at former Foreign Secretary level

Policing in Conflict Zones: Palestine

Colin Smith, QPM, Head of the EU Police Mission for the  
Palestinian Territories

A European Perspective of Effective Policing

Dr Guido Bertolaso, Head of Italian Department of Civil  
Protection, President of the Council of Ministers

New Fire Safety Initiatives in Modern Structures  
and Towers

Brigadier Thani Al Matrooshi, Director General, Dubai  
Civil Defence

The Importance of IT Security:

The Middle East Experience

Dr.-Ing. Oliver Weissmann, Information Security &  
Security Strategy, Help AG, Gelnhausen and Co-Editor IS  
27000 & 27003

Making for a Safer International Workplace

Ray Hurst, President, Institution of Occupational Safety &  
Health

#### Monday 14th January 2008

#### Police and Fire Middle East - Day 1

“Emergency Services Response and the  
Management of Disasters”

Chairman:

David Seaborn Davies  
former Chief Superintendent, Metropolitan Police, London

Contingency Planning for Major Financial  
Centres

Brett Lovegrove, Head of Counter Terrorism, The City of  
London Police

Case Study –

The Buncefield Fuel Terminal: Lessons Learnt  
From Dealing With Probably Europe’s Largest  
Explosion and Oil Fire Since World War II

Deputy Chief Fire Officer Mark Yates, Hertfordshire Fire &  
Rescue Service, UK

Fire and Rescue Service Organisation and  
Training for a Major Gas Terminal

Chief Fire Officer Tony Belsten

Ras Laffan Industrial City, Qatar Petroleum, Doha, Qatar

Police Command and Control:

Dealing with Disaster

Brigadier Dr. Mohammed Ahmed Bin Fahad, Director,  
Dubai Police Academy

Planning and Training for Co-ordinated  
Responses to Disasters

Richard Gordon, MBE, Director

Bournemouth University International Disaster Planning  
Centre

Emerging Crises in a Chaotic Context: New  
Frontiers – New Strategic Answers

Dr. Patrick Lagadec, Director of Research, Ecole  
Polytechnic, Paris, France

#### Tuesday 15th January: Police and Fire Middle East – Day 2

“Planning and Preparing for Major Incidents  
Involving The Transport Sector”

Joint Chairman:

Neil Wallington, Conference Director, Messe Frankfurt  
Middle East

David Seaborn Davies, former Chief Superintendent,  
Metropolitan Police, London

Preparing for a Crisis Situation on the High Seas  
Chris Metson, Fleet Safety Manager, P & O Cruises

The Development of Air Support in Police  
Operations

Colonel Pilot Anas Al Matroushi, Deputy Director of  
Transport and Rescue Affairs , UAE Police Air Wing

The Policing of Railways and Metro Mass  
Transport Systems



# PRODUCT SHOWCASE

Deputy Chief Constable Andy Trotter, British Transport Police

## Keeping Up With Globalisation: The Challenge for Airport Fire Services

(a) Ms Peggy Hinkel, Managing Director  
(b) John Olsen, Senior Programme Manager,  
Frankfurt International Airport Fire Training Centre

## Dealing with an Aviation Emergency

Speaker from Sri Lanka Airlines

## Using New Emergency Vehicles and Technology to Advantage

Major Rashid K. Bin Massam Al Buflaseh,  
Dubai Civil Defence

## Case Study:

### The Burnley Road Tunnel Fire, Melbourne, Australia

(a) Former Chief Fire Officer Jeff Godfredson, Melbourne  
Metropolitan Fire Brigade  
(b) Greg Bawden, Assistant Chief Fire Officer, Melbourne  
Metropolitan Fire Brigade

## **Monday 14th January 2008 - General health and safety day**

### The Institution of Occupational Safety and Health Middle East Conference in conjunction with Intersec Middle East in 2008

10:00  
*Coffee and Conference reception*

10:30  
Ray Hurst- President, Institution of Occupational Safety  
and Health (IOSH)  
*Welcome and opening*

10:40  
Shawqi Sajwani Group Director of Business Excellence,  
Dubai Holding  
*Safety and health performance – a critical component for  
business*

11:20  
Yasser Rahim Safety and Security Manager, GPIC  
*Elements of effective safety management systems – GPIC  
case study*

12:00  
Emlyn Jones Projects HSE Co-ordinator, AMEC Oil and  
Gas; British Petroleum Sharjah  
*How to get people to work safely, when no one is watching*

12:45  
*Lunch*

14:00  
Waddah Ghanem Group EHSQ Compliance Manager,  
Emirates National Oil Company  
*The role and influence the national oil and gas industry in*

*the UAE has played in raising the standard of safety in the  
Middle Eastern construction industry*

14:40  
Dr Dhiraj D. Radadiya Health, Safety and Environment  
Consultant, Takreer  
*Challenges and the way forward – corporate social respon-  
sibility*

15:20  
Vincent Busk Health and Safety Director,  
IsgInteriorExterior  
*Positive culture, positive results*

16:05  
*Finish*

## **The Institution of Occupational Safety and Health Middle East Conference in conjunction with Intersec Middle East in 2008**

### **Tuesday 15 January 2008 - Construction day**

10:00  
*Coffee and Conference reception*

10:30  
*Opening address by Chairman*

10:40  
Dr Chris Doyle Head of EHS and Sustainability,  
Continental Europe, Middle East and Africa, Bovis Lend  
Lease - *The BuildSafeDubai initiative*

11:20  
David Bass Health and Safety Manager,  
Al Naboodah Contracting  
*Brief on legislation in the UAE and GCC*

12:00  
Mark Warrington Vice President of Construction Safety,  
EHS (Ports, Customs and Free Zone Corporation),  
Dubaiworld  
*Fire safety during construction – Rising to the challenges*

12:45  
*Lunch*

14:00  
Wayne Harris General Manager, Corporate Safety and  
Health, Nakheel  
*Risk management on International projects*

14:40  
Garry Crighton Health, Safety and Environment Director,  
Dodsall  
*Definition and measurement of safety, health and environ-  
ment culture*

15:20  
Aziz Zerban Regional Health and Safety Manager, EC  
Harris International  
*Panel discussion – Safety in the Emirates*

16:15  
*Finish*

## Bosch Easy Series Intrusion Panel- Making Security Easy

A powerful intrusion control panel does not have to be complicated. The panel communicates with the user by voice. It actually speaks to guide the user (or installer) and provides alarm and system status information in the users' own language, even remotely over the telephone! Easy Series is an intrusion system for small commercial and residential applications. The intrusion panel requires minimal training and support. The control center speaks and shows animated icons, making it easier



for the user to understand information and tasks. When the user approaches the system, Easy Series immediately provides any critical information.

With SMS Text Messaging format, users can read system information on a mobile

telephone display. With Voice Dialer format, users can listen to system messages using a telephone. System event reports can be sent to a telephone in addition to the central station, reducing central station report traffic and monthly monitoring fees.

Features of the Bosch Easy Series System:

- Speaks language of choice to convey system information
- Proximity tokens silence, reset, or turn the system on or off
- Advanced false alarm reduction
- Minimal training and support requirements
- Simple icon-based control center
- Easy to install, configure, and test

E-mail:  
mohamed.elhamdaoui@nl.bosch.com  
Fax:+31 40 25 77 300

## Bosch IP Network Video Monitoring Systems - Innovative Solutions for Security Applications

Practically every new network installed today uses Internet Protocol (IP) technology, on which Bosch IP Network Video is based. IP infrastructures can be found just about everywhere: in the home, at the office or in public places. Bosch is the obvious choice when it comes to implementing your CCTV-IP solution. Why? Bosch is a leading edge, worldwide supplier of IP-related products and services.



Quality is a high priority at Bosch and the company's compliance to the ISO9000 standard ensures maximum customer satisfaction. Bosch offers full customer support, including training and backup. Moreover, its global presence makes fast and reliable delivery and support possible.

Flexibility is another priority at Bosch. Many Bosch IP encoders are equipped with

local recording media, typically hard disk drives or compact flash cards. Such storage allows video to be recorded in the vicinity of the camera. This also means bandwidth-intensive video data does not need to be streamed 24x7 across the IP network to a centralised Network Video Recorder (NVR). Thanks to modern compression technologies, video streams can be transported on relatively low-bandwidth WAN connections, and still maintain good quality. This also results in a lower storage-capacity requirement.

Bosch can help to make a smooth, efficient transition from a current system to IP capability: Bosch offers a complete line of CCTV-IP products for every application.

E-mail:  
mohamed.elhamdaoui@nl.bosch.com  
Fax:+31 40 25 77 300

## The FPA 5000 Modular Fire Panel from Bosch

Bosch has rethought the needs of fire panel installers and operators. The result is a modular system platform that simplifies installation and maintenance in a revolutionary way.

Previously, the planning, installation, expansion, and operation of fire detection system was a complex matter. With the new FPA-5000 Modular Fire Panel, Bosch has created a completely modular concept that permits the flexible use of uniform system components.

Bosch's new modular fire panel is ideally suited for small as well as larger buildings and covers requirements starting from ten



up to thousands of detection points, using the successful LSN addressable bus technology. By selecting the required elements, it is possible to compose a custom-tailored fire panel, including the handling possibilities of devices as diverse as conventional detectors and annunciation devices.

The concept opens up high savings potential for customers and installers alike. Customers only need to acquire as much system modules as they actually need. At the same time, the option remains open to expand the system at any time. Regardless the system size, the FPA5000 shares the same intuitive touch screen controller. This reduces significantly the training needs maintenance and operating personnel.

E-mail:  
mohamed.elhamdaoui@nl.bosch.com  
Fax:+31 40 25 77 300

[www.fire-safety-security.com](http://www.fire-safety-security.com)

Please visit our comprehensive website for these industries where all your information needs could be met.

- Manufacturers and Suppliers - Latest Product Showcase  
- Exhibitions and Conferences

## webEntry™ II Pro Web Based Access Control

**W**ebEntry™ II Pro is ideal for small to medium sized facilities and has revolutionised the access control market by allowing users to automatically control and monitor their property regardless of time or location.

If an event happens, webEntry II Pro simply advises you of the status of alarms and activity at your facility by sending notifications of alarms/events via email, PDA, or



mobile phone. Totally IP based, there is no software or dedicated PC required. Simply connect the webEntry II controller to a network and you can manage up to 64 doors, print ID cards, run reports and view alarms using a standard Microsoft web browser on

any networked PC. You can even open a door via your web browser.

Features in brief:

- Administered via web browser
- Control up to 64 doors
- Integrated ID Badging
- Graphical Alarm Maps Display
- Control of External Systems such as CCTV
- Alarm notifications via email, pagers, mobiles
- Multi-language support
- Optional Time and Attendance Reporting module

Tel: +44 (0) 28 9045 6767

E-mail: cem.sales@tycoint.com

## AC2000 SE (Standard Edition) Integrated Security Management System

**A**C2000 SE (Standard Edition) is a powerful and fully integrated security management system. With CEM manufacturing both the system hardware and software, AC2000 SE incorporates CEM's advanced hardware range and sophisticated software that enables customers to build a self-configured, customised system. AC2000 SE can also be further customised by CEM to meet client's unique requirements, making it one of the most comprehensive security management systems available.

AC2000 SE has been successfully installed at some of the largest facilities around the world including amongst others, corporate premises, oil refineries, ports and universities. Continuously developed to meet the



most difficult of security needs, AC2000 SE provides a flexible and highly stable solution for installations where security is of paramount importance.

The AC2000 SE Server, running either Unix or Linux operating system, provides a highly sophisticated level of power and system

resilience, whilst Windows® based operator workstations present the user with a familiar, easy to use frontend. AC2000 SE not only utilises CEM's advanced range of hardware products including intelligent card readers and Ethernet-ready controllers, but also offers compatibility with read heads from third party manufacturers.

Extended Operational Applications...

- Central Monitoring (Alarm Event Display)
- Zone Monitor
- Integrated Photo Badging (CEM VIPPS System)
- Guard Tours
- Biometrics Support
- Rolling Transaction Display
- Visitor Management
- Elevator Control
- Database Partitioning
- Time & Attendance Reporting
- Failover – Dual redundant server
- Integration with third party systems
- Standard System Link

Tel: +44 (0) 28 9045 6767

E-mail: cem.sales@tycoint.com

## AC2000 AE (Airport Edition) Integrated Airport-specific Security Management System

**U**sed by many of the world's leading airports over many years (including 80% of UK airports), AC2000 AE has a proven record as one of the most reliable and resilient airport security solutions available. The flexibility and high quality offered by AC2000 AE is a key factor in its suitability for the airport environment. The system can be customised to meet the specific needs of each airport with new functionality added as the airports security needs change over time. Advanced access control for mission critical airports...

The CEM range of intelligent card readers offer advanced access control at secure points throughout airports, controlling air-



side and landside boundaries, gates, Air Traffic Control Towers and associated remote buildings. With an internal database, keypad feature and LCD display, readers can validate cards and store transactions when offline, ensuring zero system downtime and a fully operational airport environ-

ment. The unique CEM S3010 portable hand held reader also provides a quick way of providing a temporary check point for random security spotchecks.

Ideal for the airport environment, the CEM card readers feature airport specific door modes such as Passenger and Airbridge Mode; controlling doors and external equipment to enhance the overall efficiency of airport operations and passenger throughput.

Extended Operational Applications...

- Check-In Desk Enabling
- Luggage Carousel Enabling
- Passenger Segregation
- Airbridge Monitoring System
- Passenger Reconciliation
- Panic Button Facility
- Taxi Management
- Vehicle Occupancy
- Contractors Module
- Direct Link to Airport Invoicing
- Card Parking Facility
- Airport Link
- Equipment Enable

Tel: +44 (0) 28 9045 6767

E-mail: cem.sales@tycoint.com

**ABSOLUTE  
Outdoor Active Dual  
Technology System**

*Minimum false Alarm rate with the exclusive outdoor dual technology barrier 'ABSOLUTE' from Sicurit Alarmitalia Spa*

**A**BSOLUTE Dual Technology Outdoor Intrusion Detection System is a high security dual-technology Infrared/Microwave detection system designed for outdoor installation, enclosed in columns made of extruded aluminium. The system provides for maximum reliabil-



ity and accuracy in the detection of intruders with minimum false alarm activity. ABSOLUTE columns can be fitted with optional video cameras for immediate visual verification and assessment of all alarms. With its neat, unobtrusive design, expandability, and seamless integration into existing intrusion detection and perimeter detection systems, Absolute is the ideal solution for the upgrading and enhancement of existing facility security systems, and is the system of choice for new facilities.

Ideal applications for the ABSOLUTE Intrusion Detection System include the protection of industrial, commercial, correctional, or highly sensitive business and land areas, in which a high degree of perimeter security is required. This completely new combination of outdoor detection allows perimeter protection with coverage of up to 150mt between ABSOLUTE columns. Microwave technology, combined with infrared sensors, considerably reduces the possibility of false and nuisance alarms while maintaining high security standards. Doppler radar is used to supplement detection fields where overlap is not possible. Different Heights are available (from 2.00 up to 6.00 meter) with different customizable configuration (up to 2 Microwave and 6 Infrared Beams).

E-mail: [export@sicurit.it](mailto:export@sicurit.it)  
Fax: +39 (0)2 3088067

**INFRATRONIC  
Outdoor Long-range  
Passive Infrared  
Detector (PIR)**

**I**NFRATRONIC is a long-range Outdoor Passive Infrared Detector (PIR) designed to detect any intruders by his movement and infrared contrast against the background. Two curtains sensing areas provide the alarm only when they detect infrared radiation emitted by a human body entering in the first curtain and leaving the second curtain. The detection algorithm eliminates slow temperature changes and avoid nuisance alarm caused by small animals, flying birds and moving vegetation.

INFRATRONIC feature a tamper and mercury switch which is activated whenever the device is opened. This allows the security guards to identify any attempt to disable INFRATRONIC or alerts them if the unit is out of service due to maintenance work. With its 150 meter range this unit can be used for the protection of large buildings as well as used in combination with already existent CCTV systems.



Since INFRATRONIC only react to infrared radiation, they can be used during day&night as well as under changing climatic conditions such as fog, rain and snow. For installing, the robust IP65 weatherproof aluminium housing is supplied with his bracket.

An easy optical alignment is provided through a built-in view finder. A precise optical protection can be obtained due to the accurately defined sensing curtain. The connection cables are completely invisible and equipped with concealed cable channel inside the bracket.

E-mail: [export@sicurit.it](mailto:export@sicurit.it)  
Fax: +39 (0)2 3088067

**DAVE  
DIGITAL Long-Range  
Microwave Detector**

**S**ICURIT new Digital Microwave represents a further technological step forward in outdoor perimeter protections. It has been designed for quick and easy installation and is suitable for any kind of environment situation that require medium - high security standards.

Intrusion detection, using a modulated amplitude sensitive system, takes place within the invisible pattern of microwave energy existing between transmitter and receiver. Changes in signal amplitude at the receiver are directly related to the object's size and density, allowing the sensor to discriminate between objects.

DAVE is able to inform the user also on power and battery status, eventual interferences, over temperature and installation faults. The system still can be set and aligned in the traditional way, by using trimmers and dip-switch. The major innovation is the implementation of the microprocessor that increases the detection capability performance of the system while reducing false alarm rates. With an additional board DAVE can provide:



- CPU Connection for data analysis
- Settings of all the operational parameters from CPU
- Parameters analysis of each Transmitter and Receiver
- Parameters control
- Detection of crossing times
- Sensitivity adjustment
- Alarm storage in log files
- Serial Board RS485
- Possibility to install in series up to 8 systems

E-mail: [export@sicurit.it](mailto:export@sicurit.it)  
Fax: +39 (0)2 3088067

[www.fire-safety-security.com](http://www.fire-safety-security.com)

Please visit our comprehensive website for these industries where all your information needs could be met.

- Manufacturers and Suppliers
- Latest Product Showcase
- Exhibitions and Conferences

**Access Control,  
Intrusion Detection and  
Guard Patrol Products  
from Rosslare**

Rosslare Security, a division of Rosslare Enterprises Ltd. manufactures and markets high-quality security products world-wide. Since its inception in 1982, Rosslare implements the latest technologies for its corporate, residential, and institutional products and systems. Our three main product lines – Access Control, Intrusion Detection and Guard Patrol, together with a growing product range have turned Rosslare Security into a one-stop-shop for wide-scale security needs.

With Rosslare, you receive the best of all worlds; world-class product engineering and design and world-wide professional customer service, while benefiting from the quality and affordability of a self-owned manufacturing facility in China. Rosslare holds itself to the highest standards of customer service and manufacturing quality (ISO 9001:2000, ISO 14001:2004). The company's production complies with the EU Directive 2002/95/EC on Restriction of Hazardous Substances (RoHS).

**Access Controller AC-225**



A breakthrough single / dual door access controller developed for the commercial and institutional market.

The AC-225 intelligent security system introduces next level access control through, expandable inputs/outputs, TCP/IP communication - on and off-site, a basis for add-on applications and security logic rules. It is the only multi-site access control system to date to combine strong performance, limitless throughput, seamless integration with other systems and enhanced security rules all through one system.

**AY-Q6250 and its keypad version, AY-Q6350**

A patented, industry first – Mifare® technology encased in a metal body, combining smart card technology with an anti-vandal metal shield.

Both units represent Rosslare's latest addition to the Mifare Card Readers series. The units provide next generation smart card reading by offering all the benefits of



Mifare cards serial ID reading to any standard access control system. They are gaining recognition for their ability to read the Mifare format through 13.56 MHz cards at a range stretching up to 45mm (1.8") as well as their seven programmable output formats.

**HomeLogiX™**



An advanced 40 zone wireless control panel for residential and light commercial intrusion alarms.

The 40 Zone wireless control panel provides advanced functionality for the best in home security, while being aesthetic in design and easy to use.

A two-line backlit LCD display provides all necessary system information at a glance. Users can obtain vocal information about the system status anytime with a press of a button, locally or remotely by telephone.

Homelogix™ is compatible with Rosslare's line of wireless sensors and remotes, enabling you to expand your security system to fit your needs, without costly and invasive installations.

Email: info.apacme@rosslaresecurity.com  
Fax: +852 2795 1508

**www.fire-safety-security.com**  
- Manufacturers and Suppliers  
- Latest Product Showcase  
- Exhibitions and Conferences

**H55ZME-F with 2.5x  
Built-in Extender**

Max. 1,650mm (with 2.5X extender in use) of focal length with 0.2 degrees horizontal angle of view definitely captures faraway objects and recognises human



550m away. Ideal for versatile applications such as borderlines, coasts, parks, town centers, stadiums and vast areas. Wide focal length from 12mm to 1,650mm covers wide field of view by means of standard angle of view to super-telephoto. While ultra-high magnification zoom, 55X, operation speed of zoom and focus in traverse is as fast as 4.5 seconds. 2.5X extender is factory built in, and images can be captured with the best suited angle of view along with various objects. Available in Spring 2008.

Fax: +49 40 561 92 334  
E-mail: [ssd@pentax.de](mailto:ssd@pentax.de)

**H20ZAME Series, High  
and Ultra High Speed  
Zoom and Focus**

Master piece from PENTAX, the world standard 12-240mm F1.6 zoom lens keeps fascinating users all over the world by featuring high and ultra high speed



zoom and focus. High Speed version (PH, FH types): 4.5 seconds, Ultra High Speed version (PK, FK): 2.0 seconds to move the zoom and focus 'End to End'. Reducing the risk of missing the object while zooming in/out and adjusting the focus, the feature ensures to capture the target right at the moment, especially ideal for traffic surveillance.

Fax: +49 40 561 92 334  
E-mail: [ssd@pentax.de](mailto:ssd@pentax.de)

**Wireless CCTV Systems from Cromax Shawley**

Shawley Pan & Tilt's with pre-builds for "Plug & Play" capability.



With their range of Pan & Tilt heads, Shawley can provide a unit to cover most applications from light commercial to heavy duty for long range, border control applications. All share the same high build standards which has given them their legendary reliability and performance.

Shawley offer pre-builds including camera, lens, housing and telemetry which takes care of all the technical issues and make a Shawley Pan & Tilt unit as easy to install as a dome but with the benefit of superior performance and reliability. Pre-builds can incorporate a wide range of cameras from their high performance Low Light camera to a Thermal Imaging unit.

The Pan & Tilt range include top mount and side mounts units such as the Baron which is a heavy duty side mount unit capable of carrying a 40kg load with precision. The Earl is a versatile top mount unit ideal for applications such as Traffic Management whilst the Duke is a heavy duty top mount unit capable of operating in severe weather conditions. The Prince is a light duty unit for indoor or external application. All units incorporate the following features;

- IP66 weatherproof standard approval
- Precision ball bearings ensure the unit remains square on both axes.
- Stainless steel shafts and fittings eliminate corrosion
- All metal gear transmission
- Low backlash for stability in high winds
- Heavy duty synchronous motors (AC version).
- Ironless rotor motors (DC version)
- DC version provides high and variable speed performance

Fax: +44(0)1633 619977  
Email: sales@shawley.com

**Explosion Proof CCTV Equipment from Shawley**

New from Shawley comes a range of explosion proof CCTV equipment including Pan & Tilt mounted cameras and monitors



The Explosion Proof range consists of two integrated camera units manufactured in stainless steel each featuring a high definition colour integrated camera. Image size Sony CCD.

Units are available with pan & tilt (speeds adjustable up to 35 dps) and with continuous rotation (360 degrees pan).

Continuous rotation versions are available with up to 64 pre-sets, multi scan mode, and user defined touring.

Within the range are units capable of operating at temperature ranges -25° to +60° and with 23 x optical zoom plus 10 x digital zoom capability.

The explosion proof monitor improves system flexibility allowing monitoring from the explosion proof area as well as the control room. The 15.1 inch LCD can be either flat mounted or desk mounted. The ATEX approved monitor takes composite video signal or VGA inputs.

Fax: +44(0)1633 619977  
Email: sales@shawley.com

**Shawley RVS in use with Humberside police (UK)**



Shawley RVS is a digital airwave defensive wire free security and surveillance system on either a global or national footprint.

Each system is easily and quickly tailored to provide a unique solution to a customer's security and surveillance issues. The Shawley RVS system is extremely versatile and has been developed to include a wide range of capabilities, sizes and functions to meet any application where a source of 240vAC is available. (Also available are 12v solutions for covert applications). Shawley RVS systems are portable and offer rapid deployment / redeployment capability with images transmitted by a choice of;

- Radio 5.8GHz
- GSM (Mobile Telephone Networks)
- Broadband / ADSL

The system allows surveillance teams to review both live and recorded images remotely from a safe location on a laptop or even a mobile phone.

Flexibility is assured by offering integration with any industry standard camera from wire free pinhole cameras to dome or pan & tilt mounted cameras depending on application and environment.

Shawley RVS avoids the need for and limitations of, costly infrastructure works. Consequently the RVS system is simple to install and its "plug and play" format means the end user needs no prior installation experience.

Shawley RVS can be used to expand existing conventional systems, provide an additional flexibility that the conventional system does not allow or work as a part of a phased move from conventional to wireless.

The Cromax Shawley RVS purchased by Humberside is a wireless (5.8 GHz) system and has given Humberside Police the flexibility to rapidly relocate the cameras to trouble spots as well as fill in blind spots within the town centre system and be able to monitor them from a portable control centre.

Humberside Police has a geographically difficult area to police. "B" Division includes the steel town of Scunthorpe with its large multi-cultural population, surrounded by vast acreages of flat farming land dotted with small rural settlements. This means police manpower resources are often stretched

and technology has been bought into play to help deal with some of the issues.

Common offences range from street robberies, fighting between ethnic groups, drug related crimes and burglary to minor offences by youths in the rural settlements. Jamie Allen, Crime Reduction and Community Cohesion Officer commented "Our investment in the Cromax Shawley RVS system was undertaken as a cost effective community reassurance measure and since the cameras have been deployed we have seen a huge reduction in the problems we were encountering".

The cameras have been effectively used as a deterrent tool as well as an aid to detection. The Cromax Shawley system was selected because it was one of the few systems that was capable of standalone operation and had the functionality combined with the ease and simplicity of operation that Humberside police needed.

Fax: +44(0)1633 619977  
Email: sales@shawley.com

**Night Vision CCTV with Lunavision from Shawley**

When the sun goes down and the lights go out how do you keep a watchful eye over a town or premises without resorting to IR or lighting specific areas?

The Lunavision low light camera from Shawley with its military performance specification offers superior performance on imagery, ruggedness, temperature, shock



and vibration. With its air cooling system, heat is transferred away from the sensor and components which enhances image quality and the signal to noise ratio. This also gives components a long life and minimises maintenance and service costs – and no lighting costs either!



- Air cooled
  - 480 TVL Colour / 570 TVL Monochrome 0,0004 lux at CCD on phase plate (in colour mode 30% video out, max AGC)
  - Up to 1000 nm IR response
  - 100% bore sight retention
  - Automatic low light integration
  - 10 bit DSP
  - High quality images & low running costs
- Its 100% bore site retention allows the camera to track targets when applying optical zoom magnification whatever the application (e.g. mobile surveillance or long range observation). The cameras can be supplied as a “plug & play” pre-build when combined with one of our range of housings and legendary Pan & Tilt units and may easily be incorporated in our Wireless CCTV solutions.  
 Fax: +44(0)1633 619977  
 E-mail: sales@shawley.com

**intersec**  
MIDDLE EAST

**Intersec  
Middle East  
Dubai International  
Convention and  
Exhibition Centre, UAE.  
January  
13th –15th, 2008**

Messe Frankfurt Middle East  
 Tel: +971 4 338 0102  
 Fax: +971 4 339 0280  
 Email: swarn.kaur@  
 uae.messefrankfurt.com  
 Website: www.intersecexpo.com



## Alarms and Sounders from Cranford Controls

### VSO

The VSO, available in white, has a low profile appearance making it ideal and an essential for all types of building. Available in 4 and 32 tones, the VSO is an innovative product, carefully designed to be used as a platform sounder for all leading brands of smoke detector.



In addition Cranford's also offers a fully lockable cover plate in red or white for use when a detector is not being fitted.

The VSO features a custom designed piezoelectric transducer which enables a low current consumption, reducing power usage to as little as 6mA at 24V dc for the VSO 32 tone and 3.6mA at 24V dc for the VSO 4tone.

Cranford's is also pleased to announce the EN54-Part 3 approval they have now gained for their VSO 32 tone.

The VSO units enable you to vary sound output via the volume switch on each unit. This will enable you to specify the volume you require for each individual platform sounder.

With the 4-tone VSO, the installer, whilst the unit is being used on low and medium settings, can adapt it for use on addressable systems.

The 32-tone version has all the major worldwide tones including AFNOR, DIN and NEN specific tones.

VSO units have a second stage alarm enabling evacuate signals to be switched on via the CIE.

### Vocalarm™



The Vocalarm™, a registered trademark, is a cutting-edge product. With such a wide variety of messages available, the Vocalarm is suitable for various applications including

fire, security and factory automation. It gives a unique way of alerting personnel to any problems or issues in a calm manner giving clear and precise instructions of what to do and delivering relevant information.

The Vocalarm offers a choice of over 35 messages to select your desired alert from. It precedes your chosen message with a 6 second sweep tone in line with BS5839 to ensure thorough attention is gained. This voice sounder is available with either a white or red body.

There are two variants of the Vocalarm, the VCLO1 which only allows for one message to be announced, and the VCLO2 which allows for you to select 2 messages and then choose which message you wish to play at any given time.

The Vocalarm uses a high quality digitised voice messaging system that makes use of a low current drive circuit.

A high crystal oscillator can be found within each Vocalarm which ensures all Vocalarm messages and tones are synchronised with other units.

### The VTG, VTB and VXB Range

Consisting of the VTG sounder, the VTB sounder/beacon, and the VXB beacon, the VTG range is well established and highly popular, and each available to run off either 12 or 24 volts.



The VTG 24Volt 32-tones sounder is fully approved to EN54-Part 3 by the LPCB and VDS on tones 1, 3, 11, 25 and 27.

The VTG is fitted with a DIL switch enabling 3 volume settings, allowing each unit to be varied to high output where additional sound out put is required. Tones are selected via the DIL switch on the PCB.

The VTG Anti-Tamper operates at 12Volts and has the added feature of a switch that upon unauthorised removal of the sounder automatically alerts the control panel.

The VTB works the same as the VTG's but has the added visual indication which the Disability Discrimination Act calls for. It is also fully compliant with the latest requirements of EN54.

All VTG's and VTB's also have a universal locking system.

The VXB is big on light output but small on power consumption. It is ideal for applications requiring an additional light output.

All of these products are available with a red or white body, a deep or shallow mounting base, and the VTB's and VXB's with various lens colours.

Fax: +44 1420 592 445

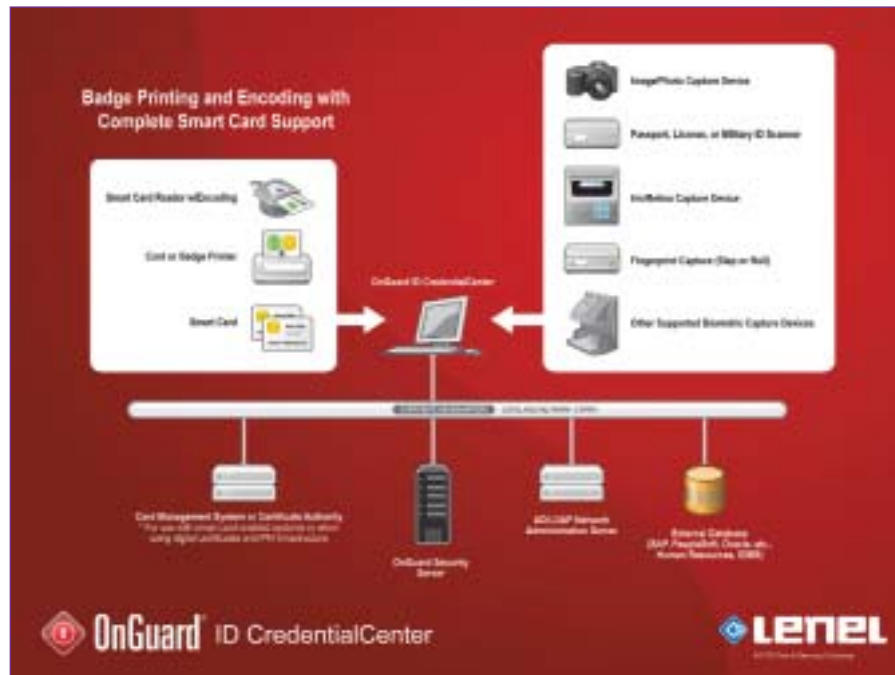
E-mail: sales@cranfordcontrols.com

## OnGuard ID CredentialCenter

OnGuard ID CredentialCenter offers the most expansive set of capabilities available to manage the employee security information life cycle. The application provides centralised cardholder enrollment and credential management, including capture and storage of the person's photo, biometrics, signature and demographic information. ID CredentialCenter analyses the contents of the capture frame, finding the face and automatically cropping the image appropriately.

ID CredentialCenter supports in-line encoding of magnetic stripe, barcode and contact/contactless smart chips during enrollment or card printing. It supports the leading contact/contactless smart card chip types and technologies, including DESFire, MIFARE and iCLASS, and manages all the information necessary to personalise the chip. ID CredentialCenter can request the PKI from a Microsoft Certification Authority, and can add other applications or data to meet customer requirements.

Through strong partnerships with logical security providers, Lenel offers seamless integration of physical and logical security functionality, enabling organisations to effi-



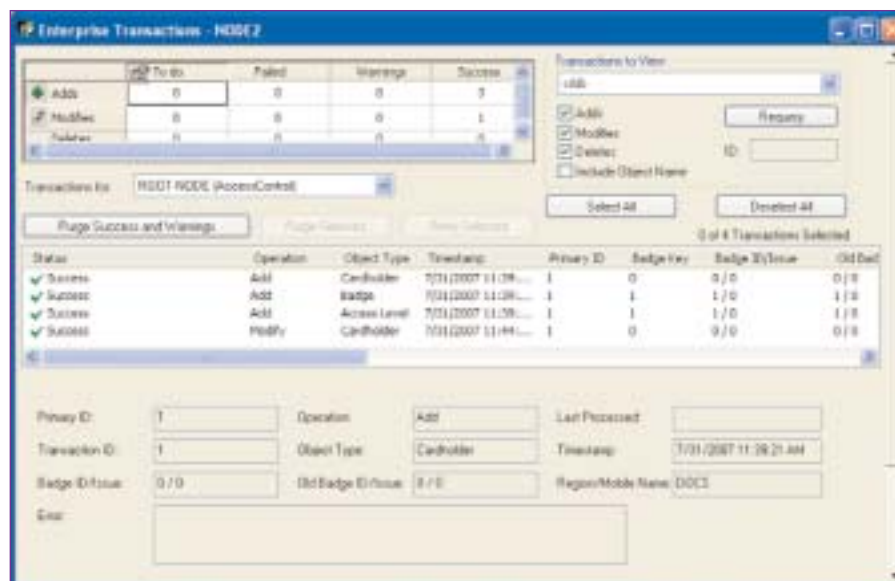
ciently deploy a one-card solution for both physical and logical access control. Through this integration, ID CredentialCenter can communicate to almost any Certification Authority and manage applications to be loaded onto the smart card. Users with an LDAP-based system for managing network identities can directly link cardholder accounts in ID CredentialCenter

to their respective LDAP accounts. Administrators in either system can restrict both physical and network access by specific employee(s), as a security measure. ID CredentialCenter can also automate creation or removal of a cardholder account upon creation of the LDAP account.

Fax: +961 4 409569  
E-mail: sales@lenel.com

## OnGuard Enterprise

OnGuard Enterprise is a multi-server, synchronised database solution designed for enterprises having multiple facilities spread across geographical areas. OnGuard Enterprise allows corporate security and IT managers to maintain central control over the entire integrated security system, while regional offices can maintain independence and autonomy over their individual regional security systems. Enterprise system administrators can configure and administer multiple regions from a single site, and system operators can monitor alarms in multiple regions simultaneously. Periodically, each regional server performs a synchronisation process with the enterprise server using wide area network communication. All cardholder, access control field and event information is uploaded to the enterprise server, which then distributes any changes received from other regional servers, enabling all servers to operate with up-to-date information. OnGuard Enterprise



is scalable, and supports an unlimited number of regional servers and client workstations without system degradation.

OnGuard Enterprise can communicate bidirectionally with third party databases to transfer cardholder information. Updates occur in real time, and cardholder information is automatically downloaded to all

associated access panels. Each cardholder carries a single ID card that is configured for access across an entire organisation. Each regional administrator can assign unique access levels for the cardholders that are allowed at his region.

Fax: +961 4 409569  
E-mail: sales@lenel.com

[www.fire-safety-security.com](http://www.fire-safety-security.com)

Please visit our comprehensive website for these industries where all your information needs could be met.

- Manufacturers and Suppliers - Latest Product Showcase  
- Exhibitions and Conferences

## OnGuard IntelligentVideo

OnGuard IntelligentVideo harnesses the power of Lenel's advanced, industry-unique technologies to offer real-time digital video content analysis -- the ability to recognise, analyse and classify objects in live and captured video. OnGuard IntelligentVideo extends the capabilities of digital video recording and surveillance by providing intelligence and automation. It brings efficiency and cost savings to systems of any size, reducing manpower requirements while increasing overall security. OnGuard IntelligentVideo is the most powerful video content analysis tool available



today, yet it is very simple to use. System operators configure parameters for generic events. OnGuard IntelligentVideo sends alarms to alarm monitoring workstations whenever those custom-calibrated events occur. Built-in advanced algorithmic mechanisms filter out invalid objects, ensuring

accuracy in video data interpretation. The solution can be customised for an unlimited number of specific applications and environments.

OnGuard IntelligentVideo Solutions are seven virtually calibration-free software solutions for common video surveillance situations, including intrusion detection, crowd control, loitering, standing vehicle, forbidden direction or path of motion, smart camera, and facility utilisation analysis. Each bundles a number of Lenel's video analysis algorithms, preconfigures them and provides a simplified user interface. If a customer site meets certain specifications, the system is shipped ready to use after minimal calibration.

Fax: +961 4 409569

E-mail: sales@lenel.com

## The New Vari-Focal Lens from Tamron

Tamron have announced their new Vari Focal f=3.0mm - 8mm F/1.0. This is definitely an innovative Vari-Focal Lens for the next generation, along with a completely new concept. The latest technologies are packed into a compact body. This lens will reinforce your lens line-up and also maximise the enhancement of your camera performance through the superb optical design and wide dynamic range.



The lens possesses the performance which becomes necessary in the future security market with Characteristic features which include:

a) Wide Dynamic Aperture Range F1.0 - F360

F/1.0 fast aperture and F/360 minimum aperture provides super wide dynamic range and maximise camera performance in any lighting conditions.

b) High Resolution: The aspherical lens design provides high-quality image throughout entire range.

c) 90 Degree Angle of View. More than 90 degree optical angle of view is realised.

Fax: +81 48 683 8594

E-mail: tokki@tamron.co.jp

## Checkpoint Security Products From Rapiscan

Checkpoint screening is required to screen bags, cases, parcels, mail and property to ensure that contraband items are not being brought into the establishment. The specification of a suitable checkpoint screening system has to be carefully chosen to ensure rapid detection with ease of use and thorough training.



Security checks have become a part of everyday life and many new applications have emerged including security checkpoints for prisons, courtrooms, government buildings, banks, amusement parks and sports venues. Rapiscan Systems provides a full range of products to include People screening, Baggage and Parcel Inspection, Hold Baggage Screening for daily use to address the needs of these diverse markets.

Fax: +44 (0) 870-7774302

E-mail: jbrown@rapiscansystems.com

## Meteor Metal Detectors

Draw on nearly forty years of design and production experience in people screening. The Rapiscan Meteor brand sets the standard in the metal detection industry



through continual R&D and innovative product development. Rapiscan have consistently maintained our position as the world's leading manufacturer of quality-walk through metal detectors. Rapiscan Systems produces a diverse range for indoor and external use for high sensitivity, high discrimination these metal detectors can be linked together with a remote Security Management System, MeteorNet Pro in addition, we provide a hand held metal detector which can be used in conjunction with the walk through or separately.

Fax: +44 (0) 870-7774302

E-mail: jbrown@rapiscansystems.com

[www.fire-safety-security.com](http://www.fire-safety-security.com)

- Manufacturers and Suppliers - Latest Product Showcase  
- Exhibitions and Conferences Worldwide

## Thermal Imaging Applications from IRISYS

**I**RISYS Thermal Imaging cameras can be used for surveillance and crime prevention. They locate people or recently parked cars and can assist in finding people hidden in vehicles or boats and trace recently fired weapons. It is easy to monitor arrivals and departures in open areas, even in fog and mist, for example in car parks, depots, ports and airports.

### Tailgate Detector



The IRISYS 2100 works in conjunction with access control systems to detect an unauthorised person following a cardholder through a controlled door. Using high-accuracy thermal imaging technology, the unit detects people by their body heat and movement.

The system receives a signal from the access system for each valid cardholder accepted at a door and compares the number of valid cards with the number of people entering. In the event that someone follows a cardholder without presenting a valid card/token a tailgate alarm output is generated. The response could be a local buzzer, a CCTV image display or even an alarm, where time and date capture could be combined with images of persons entering.

The key benefits of the Tailgate Detector are:

- Thermal imaging technology operates under any lighting conditions
- Rapid installation and minimal setup
- Unobtrusive
- Blends in with surroundings increased door security
- Enforces use of card/token
- Improves roll-call accuracy
- Interacts with existing security systems

### Evacuation Control

Infrared people counting detectors integrated with entry management systems can be used in large capacity buildings to improve incident management, where no real-time count of numbers exited for emergency services is possible.

Often staff and public are asked to leave site without reporting to muster points, so in case of a fire or bomb alarm, an accurate counting of evacuated persons is not possible.



An Evacuation Counting System can provide important indication for emergency services on numbers who have escaped in an emergency and the number of people remaining in the building.

### Thermal imaging in Safety and



### Security Applications

IRISYS is leading the drive to make radiometry and thermography systems viable for many more applications, enabling the technology to be used every day by inspectors and maintenance engineers, as common a tool as a screwdriver. Thermal Imagers are available both in hand held and fixed versions.

Thermal imagers display and measure the heat emitted by objects so they can reveal problems in a vast range of mechanical and electrical systems in a fast, precise and highly effective way, thus providing important data to help prevent fires or other hazards.

Thermal Imagers can identify the sources of excessive friction or defective switch gear for example. They provide crucial information for many applications, including measuring heat loss from buildings and identifying potential blockages in heating systems. All of this information is accessible without making contact with the subject. And as 'irregular' thermal emissions can indicate inefficiencies, or potential failures, measures can often be taken in time to prevent loss of production or breakdown of equipment.

The IRISYS thermal imager range provides high performance, ease of use and minimal cost of ownership. The product set extends from the 1000 Series, which provides 'one in every toolbox' viability for portable and fixed (online) temperature measurement and hotspot identification to the 4000 Series, a comprehensive range of portable thermal imaging systems.

The key benefits of IRISYS Thermal Imagers are:

- Minimal cost of ownership

- Dual functionality: thermography and radiometry in one thermal imager
- Ease of use
- Ergonomic design for comfortable handling

### Smart Building Solutions



IRS People Count is a smart building system which accurately measures a building's usage by staff and visitors to provide valuable information on space planning and desk/workstation allocation.

The flows of people in and around buildings can be automatically and unobtrusively measured using radio based units requiring minimum installation and cabling. The system may be installed as a standalone system for a single area or using as a networked package supporting remote viewing clients and additional floors/buildings.

Information can be generated for:

- 'In' flow via each doorway
- 'Out' flow via each doorway
- Total 'In' and 'Out' flows for each floor
- An end of day corrected occupancy for each building/floor

Fax: +44 (0) 1604 549210

E-mail: sales@irisys.co.uk

Website: www.irisys.co.uk

**intersec**  
MIDDLE EAST

**Dubai International  
Convention and  
Exhibition Centre, UAE.  
January  
13th –15th, 2008**

Messe Frankfurt Middle East

Tel: +971 4 338 0102

Fax: +971 4 339 0280

Email: swarn.kaur@

uae.messefrankfurt.com

Website:

www.intersecexpo.com

Event Sponsors



**The bt817 Mifare®  
Contactless Smart  
Card Access Reader  
with Keypad**

The bt817 Mifare® Contactless Smart Card Access Reader with Keypad is designed for security applications where a card and/or Personal Identification Number (PIN) are required, such as high traffic areas where a medium security level is specified. It can be installed in new sites or as an upgraded reader to existing proximity access control systems; interfacing with various data outputs and access control systems.



**Bio Metric bt910**

The bt817's Keypad allows for an extra level of security for user authentication with the addition of a PIN to grant or deny access. The PIN is stored in the memory of the miPASS smart card and access can only be granted upon a verification of the PIN stored on the card. The miPASS smart card is the only place where that PIN is stored. It is stored in the secure sectors of the miPASS smart card, and locked with encryption keys

that can only be read by the a reader with the matching keys.

To increase the security further, the reader is available with DESFire technology allowing 3DES (Digital Encryption Standard) encrypted RF communication between a miPASS DESFire card and access reader, allowing the most secure card transaction process available.

Fax: + 44 (0)20 8823 9001

E-mail: petergaymor@bqtsolutions.co.uk

Website: www.bqtsolutions.com

**miPASS Proximity  
Technology**

BQT's miPASS Proximity suite of products is the answer for all proximity access control requirements. Unlike other PROX or previous Magstripe Card Systems in the marketplace, miPASS Proximity as it is based on the Mifare (ISO 14443A) contactless chip technology developed by Philips Semi-Conductors.



What makes Mifare different from conventional card based systems is the embedded microchip inside the Mifare card. The storage available in the internal chip allows you to store information such as your name, company details, access control permissions, and personal log-in information for your PC/Workstation or Network infrastructure. Furthermore a Biometric template, whether it is Fingerprint or Iris can be stored in the memory of the smart card, and used with the miPASS Proximity system. This high level security feature cannot be achieved when using a standard PROX system.

Conventional PROX systems work by reading the serial number or Wiegand string embedded in the PROX card to retrieve access control permissions. There is no internal memory in the card, and therefore it cannot be used to store any other information. This disadvantage with the PROX card based system as it is can only be used for one application - Access Control...and nothing else.

The miPASS Proximity suite of products is a cost effective solution for secure access control applications. This solution is not only competitive in pricing, but also offers you the security and the ability to add more applications as your business and security needs change.

Fax: + 44 (0)20 8823 9001

E-mail: petergaymor@bqtsolutions.co.uk

Website: www.bqtsolutions.com

**Digimarc Chosen to  
Guide Upgrade of  
Russia's Driver License  
to More Secure  
Digital System**

Digimarc wins \$4.5 million contract with a trusted, long-term customer and partner for upgrade of Russian driver licenses

Digimarc Corporation has announced the Russian Federation will upgrade its driver license issuance system from a film-based photo ID to a highly secure digital driver license under a new approximately \$4.5 million contract between Digimarc and its Russian partner, Opticheskaya Tekhnika i Tekhnologiya (OTT). Digital driver licenses provide enhanced security over traditional film-based licenses, protecting IDs against photo swapping and alteration. The upgrade is planned to be rolled out across the country's 744 driver license issuing locations throughout the months of July and August.

"Digimarc has proven expertise in providing solutions for highly secure digital driver license issuance systems that can be easily integrated into existing ID issuing workflows and designs," said Igor Kornitsky, President, OTT. "We are pleased to be working with Digimarc on this important upgrade that will provide Russia's citizens with a more secure digital driver license."

"Digimarc has nearly 20 years of experience helping customers around the world make a smooth transition to digital driver license systems that are more secure and provide higher quality portraits," said Bob Eckel, president, government programs, Digimarc. "We are very happy to have the opportunity to support OTT and the Russian Federation with the expertise they need to upgrade and enhance the security of Russia's driver license issuance system."

Digimarc's 15 years of experience with the Russian program, and successful delivery of the Latvian digital driver license in 2004 as part of that country's entry into the European Union, illustrate the company's expanding presence and international driver license expertise in the region.

Fax:+44 (0) 1784 898 440

E-mail:nward@digimarc.com

[www.fire-safety-security.com](http://www.fire-safety-security.com)

Please visit our comprehensive website for these industries where all your information needs could be met.

- Manufacturers and Suppliers
- Latest Product Showcase
- Exhibitions and Conferences

**DF3000IP-DN  
High-resolution UWDR  
Colour IP Camera  
(day/night)**

With the DF3000IP-DN – the world’s first high-resolution IP colour video camera with Cam\_inPIX® technology – Dallmeier is setting standards for IP cameras in security applications. The innovative sensor concept of the Cam\_inPIX® technology, based on the latest DPS sensor technology, offers previously unseen picture quality in all conceivable lighting conditions. The ultra high dynamic range of the camera (120 dB max.), its high-resolution sensor technology (540 TVL) and the software developed especially for the security field provide clear, colour-true and detailed pictures at all times, without any blooming or smearing.



Further advantages of this IP camera generation are the integrated privacy masking, the small size and the digital PTZ functionality. Even in darkness, the DF3000IP-DN provides good results thanks to the possibility to switch to a black-and-white mode and a pivoting infra-red cut filter.

The newest WIS chip technology (Cypher 7108) with 64 MB DRAM memory converts the picture signals into MPEG-2/-4, MJPEG and H.263 formats in a pure digital picture treatment process (D2D – Digital2Digital). The integrated audio transmission is carried out in MPEG-1 Layer 2 and MP3 standards.

The optionally integrated Image & Clip store (flash HD) with a range of storage capacities from 128 MB to 1 GB (several hours of video storage depending on the chosen compression mode) contributes decisively to the availability of the entire system in security applications. The control and configuration of the DF3000IP-DN is carried out via a built-in web-server. The likewise built-in API/SDK (Application Program Interface) enables the use in a variety of 3rd party IP video management systems.

The open system concept of the camera allows further models to be equipped with intelligent video analysis functionality, such as the detection of abnormal movement.

Fax: +49 (0) 941 8700 180

E-mail: info@dallmeier-electronic.com

**Dallmeier DMS series  
“In Memory of  
Leonardo”**

The Dallmeier Leonardo DMS series consists of real-time recorders based on the state-of-the-art H.264 compression technology. These systems represent the quintessence of many years of experience in recording, processing and transmission technology. Whether 30, 60 or even 90 days recording time are required – the Leonardo DMS series is always the best choice.



Highlights of the new generation:

- Real-time split
- Real-time recording (H.264) for all channels
- Audio for all channels; all frame rates (optional for DMS 160 and DMS 80)

In the development of the DMS series “In Memory of Leonardo”, the CCTV specialists at Dallmeier have sought inspiration from Leonardo da Vinci’s pioneering, boundary-transcending inventions. As a result they produced – as a kind of homage to the universal genius – high quality products built around a cutting-edge, forward-looking hardware concept and with technical refinements which far exceed normal market standards and open up new dimensions for security systems. The Leonardo DMS series offers you the technology of the future – here today.

Central to the design of the DMS 240, the flagship of the Leonardo series, is the ability to achieve comprehensive video and audio coverage combined with the ultimate in user flexibility. The options available, both pre-configured and user controlled, will exceed the expectations of the most discerning user. SEDOR (“self-learning event detector”) intelligent motion detector and camera sabotage recognition is fitted as standard.

Besides the top-class recorder DMS 240, the Leonardo DMS series comprises the DMS 160 and DMS 80. They come with a maximum of 16 respectively 8 camera inputs and are perfectly suitable for small and medium-sized applications.

Fax: +49 (0) 941 8700 180

E-mail: info@dallmeier-electronic.com

**Picodome  
DDF3000APV-  
The World’s Smallest  
Vandal-resistant Dome  
with Cam\_inPIX®  
Technology**

With a housing diameter of just 80mm (IP 66 vandal-resistant) and a dome cover measuring just 57mm (polycarbonate), the Picodome offers users a highly discreet security solution. “But its small size is not its only quality”, explains Asad Asla, Sales Manager, Dallmeier Middle East, “The performance of the DDF3000APV is truly outstanding both in terms of picture quality and camera functionality”.

The ultra high dynamic range of the camera (up to 120 dB) with its high-resolution sensor technology (540 TVL, 720x540 pixels)

provides clear, colour-true and detailed pictures at all times, without any blooming or smearing.

Features of the Picodome include 1/3” DPS picture sensor with a fixed lens (F1.4/3.6mm)

and light sensitivity of < 0.2 Lux (in Slow Shutter mode). Field of view at 1/3” is D = 110°, H = 83.2°, V = 61.6°. Image transfer rate is 50 fps (PAL); 60 fps (NTSC).

To save installation time, the DDF3000APV features a simple to use push-point-and-lock function, which enables the engineer to configure the camera to point in any required direction.

Other features include Progressive with Segmented Frames, backlight compensation, AGC, Gamma correction, signal to noise ratio of >48 dB and a slow shutter speed of up to 8x. Seven presets are available: Universal, Details 1, Details 2, Indoor/Shadow, Indoor, Fluorescent and Low Light. The DDF3000APV features both colour and black/white modes. Configuration is remote using Dallmeier’s UTC functions.

“The Picodome is an ideal addition to the Dallmeier range of domes and cameras”, says Asad Asla, Sales Manager, Dallmeier Middle East. “The DDF3000APV offers an excellent price/performance ratio for a large scale of applications, such as the diverse retail sector with its need for discreet, high-performance solutions.”

Fax: +49 (0) 941 8700 180

E-mail: info@dallmeier-electronic.com

For your regular free copy of Fire, Safety, Security Guide please write or email us

**Concept 4000  
Office & Home  
Automation**

Inner Range has been at the forefront of the design and manufacture of world class security and integrated access control systems for over 20 years. Whilst integrated security and access control are bywords of our flagship Concept 4000 system, savvy integrators know that Concept 4000 also has very powerful automation features that have been put to use in many smart homes and offices to control lighting, heating/cooling and a vast array of other functions including control of watering and pool systems.

The recent introduction of the Touchscreen Terminal brings an attractive, intuitive interface to Concept 4000 and makes it very easy for people to interact with the security, lighting and home automation aspects of their system.



The menus that people will see on each Touchscreen are highly customisable, allowing the system integrator to readily tailor the presentation of system functionality to suit the requirements of each customer. Touchscreens can be retrofitted to any Concept 4000 system, and each system may have many Touchscreens.



This Touchscreen brings the power and versatility of Concept 4000 right to your fingertips - It underscores why the Concept 4000 integrated security, access and automation system is the premier solution for the smarter

Fax: + 44 (0) 118 957 5088

E-mail: [tim@innerrange.co.uk](mailto:tim@innerrange.co.uk)



Designed to complement or match contemporary and classic décor, the Touchscreen comes in a slimline plastic housing that is available in charcoal or ivory colouring. To further match the interior design, a custom laminate face plate can be fitted to the front of the device. Adding the finishing touch, the home menu screen can be set to one of ten colour combinations.

**Security Awareness and  
Protection of  
Infrastructure Takes  
Precedence at Intersec**

Intersec Middle East presents visitors with an ideal platform to source the most advanced solutions for securing commercial, residential and infrastructure developments, which includes transportation, ports and airports.

The trend towards installing highly developed security systems, access control systems, CCTV and IPTV systems, biometrics, IT security, physical security products and smart home systems; has been accepted keenly by developers looking to satisfy the needs of their clients and to stay in line with the international market standards.

The latest technological advances along with a vast range of products, services and initiatives coming onto the security sector of the commercial market will be showcased by leading companies in Intersec Middle East, scheduled for 13 – 15 January in 2008. Companies such as: GC Group, Honeywell, Pelco, Bosch, GE Group, Scada, Transguard,

Omnitec and lots more, will be in attendance. As reported in recent news, the growing importance of security and surveillance systems in the Middle East is tremendous. "Everybody should be aware of security issues," said the Commander in Chief at Dubai Police, he added, "We want to spread awareness, as security is now a major issue."

In addition to the present worldwide geographical situations, the ever increasing number of buildings under construction in this region has heightened the growth of the commercial security sector in the Middle East. "The market in the GCC and the Middle East is booming because of the security awareness resulting from the political situation in these countries," said Karim Alayli, Regional Manager Middle East, Norbain, in a recent article by [arabianbusiness.com](http://arabianbusiness.com)

The support of international government bodies, professional associations, expert speakers and multinational companies, has made the Intersec Middle East event a must attend event for: international agencies, national governments, regional governments, municipalities, construction companies, security distributors & agents, specialist installers, consultants, security & facility managers, and banks.

**intersec**  
MIDDLE EAST

Messe Frankfurt Middle East

Tel: +971 4 338 0102

Fax: +971 4 339 0280

Email: [swarn.kaur@uae.messefrankfurt.com](mailto:swarn.kaur@uae.messefrankfurt.com)

[uae.messefrankfurt.com](http://uae.messefrankfurt.com)

Website: [www.intersecexpo.com](http://www.intersecexpo.com)

**Dubai International  
Convention and  
Exhibition Centre, UAE.  
January  
13th –15th, 2008**



## SD Range of DVRs

The SD Range offers the user a high performance, easy to use plug and play DVR with selectable record duration providing up to 30 or 60 days recording.



- 4\*, 8, 12, 16 and 32\* channel variants
  - Consistent recording duration and smooth motion video on ALL cameras
  - "Normal, Medium and Low" recording models
  - Unique soft key menus and onscreen GUI operated from the IR Remote, attached SD Keyboard, USB Mouse or USB Keyboard
  - Remote Alarm Reporting
  - Text support (for POS transactions)
  - MultiMode Recording
  - Coax & Serial Telemetry
  - AnalyticsCapable technology including Object Left, Object Removed, Object Counting, ANPR and Perimeter Protection (available via a hardware and software licence upgrade)
- \*Available shortly after product launch.  
E-mail:sidris@dmicros.com (Middle East)  
E-mail:infobox@dmicros.com (Eastern Europe)

## Digital Sprite 2

The Digital Sprite 2 provides true flexibility for professional CCTV security solutions. An intuitive interface allows easy local user operation whilst IP connectivity provides remote monitoring and system configuration via Dedicated Micros 'NetVu Connected' software.



High quality recordings are accessible locally to the user at the touch of a button or via powerful GOTO and event recall facilities. Remote operators can utilise the latest MPEG-4 compression technology to view images via NetVu ObserVer or embedded DVIP Decoders. The DS2 includes built-in co-axial & twisted pair telemetry to enhance the range of DS2 applications. Variable alarm configuration allows remote notification of alarms from any single DS2 through a variety of communication channels. Pre-event alarm recording ensures

images are captured before the incident occurs whilst on-site communication can be maintained through high quality bi-directional audio.

A built in DVD-R writer provides a quick and easy way of copying key events to DVD or CD on-site while FTP archiving allows evidence transfer over the network, automatically or on demand.

The DS2 provides a self-contained local security solution whilst ensuring that the requirements of remote 24 hour surveillance are met through Dedicated Micros professional 'NetVu Connected' solution deployed over new or existing IP enabled networks.

E-mail:sidris@dmicros.com (Middle East)  
E-mail:infobox@dmicros.com (Eastern Europe)

## Dennard 2060 36x Precision Surveillance Dome

The combination of an aluminium pressure die cast outer body parts and impact resistant polycarbonate hemisphere makes the 2060 highly durable for use in a wide range of outdoor and indoor environments as well as being resilient to vandalism.



A high quality mechanism, combined with injection moulded optical quality hemisphere, and Sony 18x and 36x optical zoom colour / mono camera modules with dynamic privacy masking, enables 2060 users to monitor and record high quality images whilst complying with privacy and data protection legislation. Using on-screen display menus currently available in 12 languages simplifies configuration and accessing features for autho-

rised users, whilst PIN coding protects against unauthorised access.

The 2060 dome comes complete with DM / BBV / Baxall up-the-coax and multi-protocol RS485 telemetry making it compatible with industry standard control equipment and suitable for new installations as well as system camera upgrades.

A sunshield accessory is available and recommended for use when the dome is to be situated in locations subject to high ambient temperatures and strong sunlight.

E-mail:sidris@dmicros.com (Middle East)  
E-mail:infobox@dmicros.com (Eastern Europe)

## FireVu

FireVu from D-Tec the inventors and market leaders in Video Smoke Detection, provides the answer to many of the detection problems that have previously perplexed the fire safety industry. Buildings and environments that have historically proven to be impossible or impracticable for point, beam or aspirating smoke detection systems can now be protected. Even fire characteristics such as smoke stratification are overcome. FireVu sees through the stratification boundary to identify smoke and flame generation at the source. Early identification via a remote monitor allows the appropriate action to be taken in the shortest possible time. The uniqueness of FireVu is its ability to accurately detect smoke and flame patterns and differentiate between them and other on screen movement patterns. Each FireVu system can simultaneously identify smoke from each of its cameras using up to 16 separate detection zones per CCTV camera.



Incorporating AD Group's 'NetVu Connected' technology architecture providing for seamless connection and communication with AD Group companies CCTV based solutions.

E-mail: info@dtdec-fire.com

[www.fire-safety-security.com](http://www.fire-safety-security.com)

Please visit our comprehensive website for these industries

- Manufacturers and Suppliers
- Latest Product Showcase
- Exhibitions and Conferences

**The Latest from  
TAKEX**

**TAKEX “Intelligent Synchro Quad Series” photoelectric beams**

The flagship of the TAKEX range of active infrared beams is the PB-IN~HF range. Available with an external range of 50m,100m and 200m, each set offers the reassurance of a 16 beam ‘lattice’ between the transmitter and receiver. Coupled with the channel separation, double modulation and environmental (anti-fog) circuitry the PB-IN~HF range has earned worldwide recognition as the standard our rivals aspire to.



For the most secure perimeters such as prisons, police compounds and military installations, TAKEX is proud to be able to offer the PB-IN-100AT. With all the ‘peace of mind’ protection of the PB-IN~HF range, the PB-IN-100AT offers ‘anti-crawl’ protection, recognising the lower set of beams as an independent, time selectable set (avoiding the false alarms from wildlife etc). Used in many ‘sensitive’ environments, the PB-IN-100AT is the choice of the professionals.

**MS-12FE “Dual Head Outdoor PIR”**

The TAKEX MS-12FE PIR has unmatched detection flexibility across a 180° field of view. Its twin heads can be independently pivoted to unique angles for versatile adjustment options. Detectors can be set in either



AND/OR Gated configuration for superior alarm control plus DAY/NIGHT sensing-with a variable relay output for optimum flexibility. There is also the option of the MS-12TE with a single 90° sensor.

**TAKEX Speaker Sensors**

Equipped with a 12m 65 Degree PIR, the



TAKEX PV-12 speaker is capable of delivering your own message (up to 8 seconds) at up to 100 decibels (variable). The built in microphone allows warnings for CCTV monitoring, restricted site entry etc. NO/NC contacts allow the PV-12 to trigger other devices such as lights, cameras and panels. The AV-100, a non PIR version is also available.

**MW-50 Microwave Sensor**

With the launch of the new MW-50, TAKEX is proud to announce their latest addition to the Professionals choice of perimeter protection products. The MW-50 is a 50M active point-to-point microwave designed to compliment the intelligent quad beams already available.



With 2 frequencies available (K-Band), the MW-50 (L/H) allows stacking or crossing of 2 units without problems. Designed for use where beams may be impractical due to environmental issues, or specifications call for specific use of Microwave detection, the MW-50 offers a realistically priced solution. Based upon the designs of the beams, the MW-50 offers 180° horizontal rotation within the housing and 20° vertical adjustment.

The MW-50 is especially adept at coping with heavy fog, mist, rain, snow and frost conditions, offering the perfect alternative or addition to the active beams. The MW-50 offers N/O & N/C outputs, and a variable detection time for bespoke setup, and is also supplied with pole mount brackets and rear pole covers to finish the job in a professional manner.



There is also the option of a combination unit, COM-IN-50HF, which offers both Microwave and Active Infrared within one housing.  
Web: [www.takex.com](http://www.takex.com)  
Tel: +44 (0) 1256 475555

**intersec**  
MIDDLE EAST

**Intersec  
Middle East  
Dubai  
International  
Convention and  
Exhibition Centre,  
UAE. January  
13th –15th, 2008**

Messe Frankfurt Middle East  
Tel: +971 4 338 0102  
Fax: +971 4 339 0280  
Email: [swarn.kaur@uae.messefrankfurt.com](mailto:swarn.kaur@uae.messefrankfurt.com)  
Website: [www.intersecexpo.com](http://www.intersecexpo.com)



**Video Surveillance  
from  
AMG Systems**

**Guardian-Lite™ 3700**

Designed for low cost multi-channel video collection and distribution over singlemode fibre - together with associated Ethernet, or low speed data and audio sig-



nals. Architectures can be configured as a "spur" or a "ring ". When configured in a dual-redundant option the 3700 ensures no loss of signal during a catastrophic fibre failure or node failure. Available for:

- 8 channel drop and insert with data/Audio or Ethernet
- Up to 64 channels drop and insert using CWDM
- Dual redundant applications
- Full bandwidth digital transmission format
- No compromise on video quality
- No compression – real-time video – no inherent latency
- Single fibre operation – reduced infrastructure requirement
- Multiple simultaneous video plus data transmission – enables remote control of camera functions plus bi-directional data
- Multiple drop off points – easy routing for multiple control rooms
- 100BaseT Ethernet data transmission option – data interface boards selects 100BaseT or RS232/422/485
- Unlimited repeat – for long distance transmission
- SNMP compliant network management – for remote fault reporting and diagnosis.

**Reference projects include:**

- The UK NRTS - a single national approach to the future communications network on England's motorway and trunk network which is managed and maintained by the Highways Agency.
- Dublin City Council for the surveillance of the traffic on the motorways around Dublin as well as inner city traffic monitoring.
- Larsen & Toubro Ltd. for the surveillance systems on 5 new toll roads in India.

**Guardian-Lite™ 4600**

Designed for low cost multi-channel point-to-point video transmission over multimode optical fibre - together with associated



Ethernet, or low speed data and audio signals. Highly resilient, managed, low cost, transmission system for both compressed and uncompressed video signals. Available for:

- 4 and 8 channel point to point with data/audio or Ethernet
- Dual redundant applications
- Full bandwidth digital transmission format
- No compromise on video quality
- No compression – real-time video – no inherent latency
- Single fibre operation – reduced infrastructure requirement
- Single, dual and 4 channel insert modules
- Multiple simultaneous video plus data transmission – enables remote control of camera functions plus bi-directional data
- 100BaseT Ethernet data transmission option – data interface boards selects 100BaseT or RS232/422/485
- SNMP compliant network management – for remote fault reporting and diagnosis.

**Reference projects include:**

- Museum of Islamic Art in Doha, Qatar.
- The Burj Dubai Residential Area in the UAE.
- Kempinski Hotel Ishtar Dead Sea in Jordan.

**Vision™ 2000**

CCTV transmission made easy with Plug 'n Play transmission technology. Be it a Town Centre Surveillance scheme, a Shopping Centre, a Prison, a University, a Sports Facility or a Factory, the Vision range has proven it's record with numerous installations for all of these applications and many more. Vision features:

- Built-in receiver AGC – no installation or ongoing maintenance required
- Transmission over multimode fibre -



allows the lowest cost Termination techniques

- 4 km transmission range at 850nm or 6-8 km at 1300 nm – no repeaters required
- Simultaneous bi-directional audio and data transmission Options – enables remote control of camera functions plus Bi-directional audio
- Front panel LED status indicators and rear panel I/O Connectors - clear visibility of system status and ease of system cabling. Reduces risk of accidental disruption
- Plug in module and stand alone modules - enables flexibility In system design, allowing for the most cost effective solution

**Reference projects include:**

- Bexley Business Academy
- Chelsea Football Club
- Southampton University
- Duchy of Cornwall
- Oracle Shopping Centre
- New Isle of Man Prison – HMP Jurby
- Poole Harbour
- HMP Gartree
- London Westend City Centre Surveillance

E-mail: sales@amgsystems.co.uk

Fax: +44 (0) 1767 600077

**Introducing  
The S610  
Multi-technology  
Card Reader**

The new and cutting edge S610 multi-technology card reader marks a new hardware platform in the industry's most advanced S600 family of card readers. Available in both S610s for on-board serial connectivity and S610e for on-board IP connectivity, the reader features a 'new look' enclosure that is in fitting with the architectural designs of modern office buildings. The reader has the ability to support a range of card technologies including 125 KHz Proximity, 14.56 MHz MiFare and PicoPass technology and is also available as a multi-technology option to enable customers to easily migrate from traditional Proximity to MiFare smart card technology.

Tel: +44 (0) 28 9045 6767

E-mail: cem.sales@tycoint.com

[www.fire-safety-security.com](http://www.fire-safety-security.com)

Please visit our comprehensive website for these industries where all your information needs could be met.

- Manufacturers and Suppliers
- Latest Product Showcase
- Exhibitions and Conferences

**Digimarc's Industry-Leading Biometric Identification Solution Proves Effective as Crime-Fighting Tool**

The New York Times and other media highlight success that Massachusetts and Kansas have had in stopping driver license fraud

Digimarc supports 2/3 of the North American States using facial recognition biometrics to verify driver license applicant identity

Digimarc Corporation has announced that its Digimarc facial recognition-based Biometric Identification solution is helping many States to prevent identity theft and fraud and enhance traffic safety. Eight U.S. driver license issuers are using or are in the process of implementing Digimarc facial recognition solutions to ensure that only one license is issued to each legitimate ID holder.

According to a Feb. 17, 2007 article in the New York Times ("Driver License Emerges as Crime-Fighting Tool..."), the Massachusetts Registry of Motor Vehicles (RMV) recently used the Digimarc solution to nab a suspect on "America's Most Wanted" criminal list.

Similarly, the Kansas City Star reported in a Feb. 24, 2007 article ("Driver's Licenses Help Combat Fraud") that the Kansas Department of Revenue, another customer of the Digimarc facial recognition solution,

has "identified more than 1,200 cases in which people tried to dupe the system and get another identity on another license" over the past two and a half years.

Every night, Digimarc facial recognition-based Biometric Identification solutions help State driver license issuers run a combined 650+ billion image comparisons – checking new or renewal driver license portraits against each State's own driver license database and flagging potential duplicate images for further investigation. Digimarc anticipates by the end of 2007 the solution will run more than 3 trillion combined image comparisons each night as States roll out new systems.

"Digimarc facial recognition biometrics ensures individuals applying for a driver license have not already been issued a valid license under another name or identity," said J. Scott Carr, executive vice president, Digimarc. "We use sophisticated facial recognition technologies that match the new portrait to the State database of issued licenses to identify potential duplicates. Our industry-leading Biometric Identification solution has proven to be very effective in helping jurisdictions deter driver license fraud and as a result also fight crime associated with the fraudulent use of State-issued identity credentials."

According to Digimarc estimates, 29% of all U.S. driver license issuing jurisdictions are using facial recognition-based biometrics to ensure the goal of "one driver, one license" and additional jurisdictions have expressed an intent to do so. Digimarc estimates that it serves approximately 2/3 of the jurisdictions currently using facial recognition-based biometrics and is actively pursu-

ing opportunities in other States considering biometrics in the driver license enrollment process.

States have reported that duplicate license offenders caught by the system include minors who want to buy alcohol, individuals with revoked or suspended driving privileges and career criminals including drug dealers and sex offenders who use false identification to evade capture and arrest.

Digimarc Corporation, based in Beaverton, Oregon, is a leading supplier of secure identity and media management solutions. Digimarc provides products and services that enable the annual production of more than 60 million personal identification documents, including two-thirds of U.S. driver licenses and IDs for more than 20 countries. Digimarc's digital watermarking technology provides a persistent digital identity for various media content and is used to enhance the security of financial documents, identity documents and digital images, and support other media rights management applications.

Digimarc has an extensive intellectual property portfolio, with more than 300 issued U.S. patents with more than 6,000 claims, and more than 500 pending U.S. and foreign patent applications in digital watermarking, personal identification and related technologies. The Company is headquartered in Beaverton, Oregon, with other U.S. offices in Burlington, Massachusetts; Fort Wayne, Indiana; and the Washington DC area; and international offices in London and Mexico. Please go to [www.digimarc.com](http://www.digimarc.com) for more company information.

Fax: +44 (0) 1784 898 440  
E-mail: [nward@digimarc.com](mailto:nward@digimarc.com)

**GASCO Ruwais Gas Plant Innovates with CEM® IP Solution**

CEM AC2000 SE (Standard Edition) security management system secures leading gas company in Abu Dhabi

CEM Systems, a leading access control brand of Tyco International, announced today that Abu Dhabi Gas Industries Ltd (GASCO) has chosen the AC2000 SE (Standard Edition) security management system to secure its Ruwais plant. CEM was awarded the contract by Wormald Italiana, Italy.

Operating since 1981, GASCO is a subsidiary of the Abu Dhabi National Oil Company (ADNOC) and is one of the biggest industrial projects in the UAE. One of the largest gas processing companies in the world, GASCO has four processing plants including the main Ruwais Fractionation plant which can process 23,370 tonnes per day (7.8 million tonnes per year).

With officials of the Ruwais plant planning to double its capacity in 2008, they decided it was a priority to enhance security, safety and plant operations with the installation of the advanced CEM AC2000 SE (Standard Edition) access control system. The system design incorporated CEM S9032 IP controllers to control remote areas of the large plant.

"The General Contractor of the entire GASCO Ruwais project opted to install the industry-proven and innovative AC2000 SE (Standard Edition) security solution to secure multiple buildings throughout the large Ruwais plant," commented Francesco Pisano, Oil & Gas Market Manager, Wormald, Italy. "Using S9032 IP controllers the system will monitor all critical doors and emergency points, with third party Deister readers using CEM DCM 150 door control modules installed at remote buildings and connected to the central server by means of HDSL modem connection" Pisano continued.

Incorporating a Linux-based central server, the client opted to use CEM S9032 IP-based controllers for site entry/exit control at many of its plant locations. Using Ethernet connectivity the S9032 controller offers the client the benefit of remote administration and ability to remotely monitor alarms.

Thanks to the internal controller database, all readers continue to operate offline even if HDSL communication is lost with the central server database, ensuring that doors are secured and monitored at all times.

"AC2000 SE is ideal for petrochemical sites such as the GASCO Ruwais plant as it has been installed at similar sites throughout the world where security is of the utmost importance," commented Andrew Fulton, Business Development Director of Tyco International's CEM products. "AC2000 SE offers the client a highly stable means of controlling site access and incorporates a sophisticated suite of software modules including 'zone monitor' that helps the client monitor movement in their unique environment" added Fulton.

The 'zone monitor' software module provides a real time display and numerical counter of all personnel in the GASCO plant at any point in time, including an advanced report of staff in the particular area zone in which they are operating.

The AC2000 SE security management system aids GASCO's Health, Safety and Environment Policies and their vision of world-class management of its gas plants.

Tel: +44 (0) 28 9045 6767  
E-mail: [cem.sales@tycoint.com](mailto:cem.sales@tycoint.com)

**AXIS 209FD Network Camera  
Flat, Discreet Camera for Indoor Video Surveillance**

**A**XIS 209FD is a fixed dome network camera designed for discreet indoor video surveillance. The non-invasive design makes it the perfect choice for locations such as shops, hotel receptions and corridors. AXIS 209FD with its flat, compact design offers flexible video surveillance solutions for environments where discreet monitoring is preferred. Measuring only 4



cm (1.6 inches) in height, AXIS 209FD is discreet and takes up a minimum of space. All parts of the cameras have been optimized to create a flat design.

- Flat non-invasive design
- Progressive scan
- Power over Ethernet
- Easy installation

Website:  
[www.axis.com/products/cam\\_209fd/](http://www.axis.com/products/cam_209fd/)

**AXIS 211W Network Camera  
Flexible Wireless Video Surveillance with Superior Image Quality**

**A**XIS 211W Network Camera is a high-performance camera designed for professional video surveillance, offering the choice of either a wireless or a wired connection to the network. AXIS 211W provides superior image quality thanks to its progressive scan sensor and advanced image processing. This makes AXIS 211W ideal for the video surveillance of locations such as retail stores, offices, hotels and university campuses.

- Superior image quality
- Simultaneous Motion JPEG and MPEG-4
- Flexible installation with wireless capability



- Secure communication
- Outdoor option

Website:  
[www.axis.com/products/cam\\_211w/](http://www.axis.com/products/cam_211w/)

**AXIS 216MFD Network Camera-  
Discreet Video Surveillance with Exceptional Image Detail**

**A**XIS 216MFD Network Camera is a high performance megapixel network camera, designed for professional video surveillance in locations such as retail stores, schools, banks and governmental buildings. AXIS 216MFD features a 1.3 megapixel sensor that delivers crisp and clear images, perfect for the identification of objects and persons. The high quality lens uses DC-iris control for improving the depth of field and protecting the sensor at intensely illuminated scenes. The megapixel resolution allows



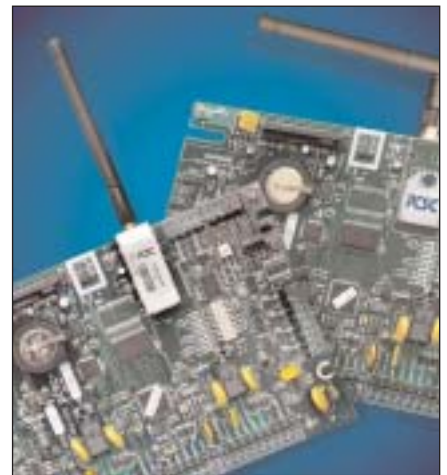
important areas like entrances or checkouts to be monitored in great detail.

- Megapixel resolution
- Simultaneous Motion JPEG and MPEG-4
- Discreet and compact design
- Power over Ethernet
- Two-way audio support

Website:  
[www.axis.com/products/cam\\_216mfd/](http://www.axis.com/products/cam_216mfd/)

**Building Controls and Security information Systems from PCSC**

**W**ireless technology is just everywhere from cell phones, Internet Cafes to wireless digital cameras. The reason for the explosion is its convenience, ease of use and low cost. Until now, the most common usage of wireless technology in the security industry was the “proximity” technology used in conjunction with readers and cards. Wireless technology in general has been a “proprietary” technology, where manufacturers did not allow access into their products, so frequency, protocol and message processing only operated with the manufacturer’s own product line.



**Communication Technology Leaders**

As a leader in technology, PCSC has integrated an open global standards wireless technology as an alternative to “wires”. Today’s industry communications consists of “older RS 485” and Ethernet communications networks. PCSC now offers 4 types of communication topologies, providing our users with the ability to choose the right communication network for quality and cost effective installations. The PCSC communication topologies include RS 485, TCP/IP, WiFi and XBee-PRO™ ZigBee wireless technology.

Read PDF

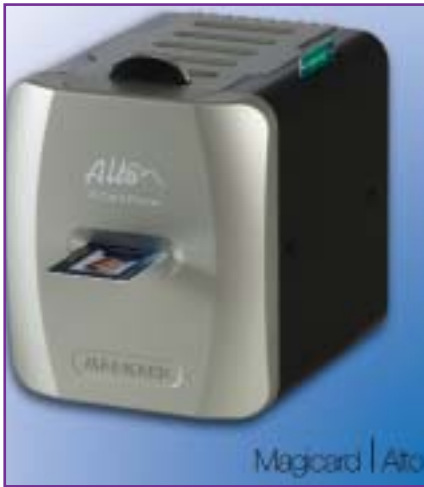
**Wireless Technologies**

A variety of wireless technologies have been designed, each for a specific purpose and our investigation shows the XBee Pro offers the best feature set for the security industry. XBee Pro is a global standard utilizing globally accepted frequencies and therefore no special “approval” is needed. XBee Pro offers operating distances well beyond the capabilities of WiFi or Bluetooth technologies and offers network topologies such as “point to point” and “point to multi-point” or “Mesh” technology. For security, the XBee Pro utilizes a 128 bit AES encryption.



**Card Printers from  
Ultra Electronics**

**Alto- Card Printing Goes On  
the Move**



Printing ID Badge Cards has always meant organizing people to come into the office to have their photos taken. Now, card printing is going on the move with the new Magicard Alto printer.

With dimensions of only 175mm (6.9 inches) wide, 200mm (7.8 inches) high, and 211mm (8.3 inches) deep, and weighing only 3.2kg (7 pounds), the Magicard Alto is ideal for moving around the building or taking to branch offices.

The attractive design of the Magicard Alto makes it great for use in company reception areas and for hospitality events.

Within the compact dimensions is a full-featured professional colour ID card printer:

- Prints a full colour edge-to-edge 300dpi image in 30 seconds using dye-sublimation technology.
- At no extra cost, a Holokote™ anti-copying watermark is printed across the entire card surface.
- Magnetic stripe card encoding (available option).

It's not only a compact printer, but it also comes at a compact retail price of only US\$1,599.

Magicard colour ID card printers range from the great value Alto and Avalon through the rapid, robust and reliable Rio and Tango models, up to the top-of-the-range reverse transfer Prima.

**Avalon- Single-Sided ID Card  
Printer**



The Avalon offers proven Magicard security and reliability in a great value package. If you want to print great quality full colour cards edge-to-edge, again and again, then the Magicard Avalon is for you. It's easy to setup and use and, with all Windows drivers supplied, it will provide you with reliable printing for years to come.

The Magicard Avalon has a 100 card capacity input hopper and 50 card capacity output hopper for batch printing and features include Ultra's patented HoloKote™ and HoloPatch™ card security system which protects your cards against unauthorised copying. HoloKote™ security is even greater when printing on HoloPatch™ cards.

- High quality 300dpi image, printed right to the edge of the card in 35 seconds.
- At no extra cost, a Holokote™ anti-copying watermark is printed across the entire card surface.
- Competitively priced high-quality colour and monochrome ribbons for lower consumable costs.
- Magnetic stripe card encoding is available (Avalon 105 option).

Magicard colour ID card printers range from the great value Alto and Avalon through the rapid, robust and reliable Rio

and Tango models, up to the top-of-the-range reverse transfer Prima.

**Prima- Reverse Transfer  
Laminating Card Printer**



Ideal for high-quality print images and where a durable card is required.

The Magicard Prima prints on the reverse of a transparent PVC re-transfer film which is then laminated onto the face of a card made from PVC, PET, ABS or PVH. The quality of the finished card is similar to that achieved by the off-set litho printing process, but with the advantage that every card can be different.

For high volume printing, the card supply drawer holds 300 cards and is re-loadable during printer operation. The ribbon and re-transfer film have a large capacity of 1,000 prints.

The Prima is a full-featured professional colour ID card printer :

- Prints a high quality full colour edge-to-edge 300dpi image in 30 seconds using reverse-transfer technology.
- Double-sided printing.
- Magnetic stripe card encoding (available option).
- Contact chip and Contactless (Proximity) card encoding options.

Magicard colour ID card printers range from the great value Alto and Avalon through the rapid, robust and reliable Rio and Tango models, up to the top-of-the-range reverse transfer Prima.

Fax:+44 (0) 1305 777 904

E-mail:UKSales@ultramagicard.com

**Setting a Standard**

XBee-PRO™ is designed under the standards of the "ZigBee Alliance", an association of companies working together to maintain a global standard for the wireless device. XBee Pro is developed with inherent advantages that make it a viable solution for the "Total Building Control" market. XBee Pro is designed for use with battery operated devices. Its low power consumption is enhanced with the ability to place it

into a "sleep mode" and awake only when needed to ensure battery life for years. This advantage allows XBee Pro to be incorporated into devices such as alarm sensors, door locks, lighting and many more products to eliminate the need to "wire". The use of XBee Pro will create an easy means for interoperability between vendors and systems.

XBee-PRO™ is a low power wireless transmitter and receiver ("transceiver") using a

globally accepted 2.4 GHz frequency band. It can support 13 channels of communication each with the ability to support over 65,000 nodes, more than enough for any installation.

Its performance in transmitting distances of up to 1 mile (1.6 km) in outdoor environments and 300 feet (91 m) in indoor conditions provide the ideal wireless topology.

Fax:+1 310 303 3616

E-mail: hrozner@1pcsc.com

**iButton- World Class Security with Stainless Steel Durability**



**iButton™**

**A Tougher Approach to Your Auto-ID Needs**

**What is an iButton?**

An iButton® is a computer chip with a globally unique address, factory-lasered at time of manufacture (think of it as a URL for each iButton). iButtons are essentially smartcards. But rather a plastic, non-robust shell, the computer technology that makes up an iButton is housed in tough, ruggedised stainless steel 16mm diameter can. Making it ideal for applications where

a robust solution is required or where cost of ownership is an issue. iButtons can include read/write memory, clocks, thermometers and data loggers. They deliver or record data wherever needed. All this power and capability make iButtons ideal for a wide range of applications including access control, eCash transactions, asset tracking, and environmental data logging.

**The Globally Unique Key- 281,000,000,000,000 Different Combinations!**

An iButton's 64-bit address provides a simple, secure way of identifying a person or asset. It acts like your personalised "key" to protected information. When you present the correct key to a service control unit (SCU), the desired event (like the opening of a lock) is enabled. SCUs are micro-processors or any computing device handling authentication of a user token and validation of its data. Common SCUs are found inside door locks, POS terminals, or prepaid utility meters. This is why iButtons are perfect for various access control functions like access to buildings or computers, and authorising vehicle or equipment operation.

**So Rugged It Lasts Forever!**

iButtons bring unparalleled durability to access control applications. Sat on it? Stepped on it? Dropped it in water? There is no need to worry about destroying a key because iButtons can withstand harsh indoor or outdoor environments. The durable iButton is wear-tested to last a minimum of ten years, so you are not constantly replacing flimsy plastic access cards. For

added convenience, they easily attach to a key fob, ring, or even a watch.

**So Simple It Interfaces to Virtually Anything and Uses Almost No Energy!**

iButtons require a physical/electrical connection to whatever is writing or reading data. However, a novel digital communication scheme called a 1-Wire® interface reduces the number of electrical contact points to just one, plus a ground reference. With the connection so simplified, you get very durable dust- and moisture-immune probes that interface to most surfaces. An iButton reader draws virtually no power in standby mode and less than 2mA during communication—making it ideal for battery-powered devices such as electronic door locks. Reading an iButton's unique address takes no more than 10ms. A typical iButton lock can operate more than 60,000 openings on a set of four AA batteries. Now you will change batteries every few years instead of every few months.

The unique address uses 8 bits to identify the type of iButton and 48 bits to generate a serial number. That's enough numbers to make 50,000 keys for every person on the planet! iButtons are an exceptional value for security and durability. Every iButton delivers a minimum of 10 years of trouble-free performance. They can last up to 3 times as long as a smart card, which significantly reduces operational costs.

Website: [www.ibutton.com](http://www.ibutton.com)

E-mail [greg.owens@dalsemi.com](mailto:greg.owens@dalsemi.com)

**Simplex TrueAlert Text Messaging Appliance**

High visibility, multi-colour LED text message board provides visible textual alarm notification controlled from compatible Simplex® fire alarm control panels:

- During alarm conditions, up to 32 pre-programmed message selections can be activated in response to pre-defined emergency situations or linked to specific system point status conditions



- Text messages provide textual alarm notification for areas of high noise or with other audibility limitations
- Text messages can duplicate a broadcasted



audible message or can provide more local detail per the Mass Notification plan

- Compatibility includes the 4100U and 4010 Series fire alarm control panels
- UL listed to Standard 1638, Textual Visible Appliance; CSA listed to Standard C22.2, No. 205, Signal Equipment

Large message presentation area provides long distance, wide area (140°) viewing:

- Dual line, 2.3" (58 mm) high messages provide typical viewing distance of up to 100 ft (30.5 m)
- Single line 4.7" (119 mm) high messages provide typical viewing distance of up to 200 ft (61 m)
- LEDs are multi-colour (red/yellow/green) to emphasise message content

- Words can be upper or lower case, standard, bolded, condensed or expanded, with selectable sizes
- Messages can be static, flashing, or scrolling with a variety of appearance/transition options

Additional (optional) operation mode:

- Message boards can also display non-alarm information via local LAN Ethernet connection using TrueAlert Messenger software

- Control panels will override any non-alarm message upon alarm; they can also be programmed to blank the display during local power failure to conserve batteries

Tel: +971 50 6177841

Email: [jcrouch@tycoint.com](mailto:jcrouch@tycoint.com)

[www.fire-safety-security.com](http://www.fire-safety-security.com)

Please visit our comprehensive website for these industries where all your information needs could be met.

- Manufacturers and Suppliers - Latest Product Showcase - Exhibitions and Conferences

**Thermal Imaging  
Cameras and Fire  
Helmets from GB Solo**

**The S2 Hand Held Thermal  
Imaging Camera**

Weighing only 750g with the ability to adapt the camera to suit individual requirements, the S2 takes hand held and hands free technology even further. GB Solo's cutting-edge technology brings you the smallest, most rugged and lightest thermal imaging camera in the world.



The S2 can be used as a hands-free unit or it can be hung over the neck like a pair of binoculars and is suitable for use with all known breathing apparatus and gas masks. As an all round camera with the capability to monitor for fire/search and rescue of victims and is ideal for any situation that requires identification of objects over long ranges, through darkness, fog or smoke there is no better camera for the job.

**Specification:**

- Direct temperature measurement with box indicator to show the measured area
  - Scene colourisation with user settable colour scheme
  - Time and date on the display
  - Battery level indicator
  - Customisable start up screen
- Optional upgrades available soon:
- Graphical User Interface for setting up the camera
  - Worlds first mission profiling imager
  - Frame capture and storage
  - Video capture and storage
  - Digital zoom
  - Ambient temperature measurement
  - Integrated Internal Battery

**SOLOunifit**

GB Solo's unique SOLOunifit integrated fire helmet combines full head, face and respiratory protection with "hands free" communications. The SOLOunifit is easily donned and can be adapted for most makes of breathing apparatus and radio systems. Clean lines of the hand moulded outer shell helps prevent hanging debris catching and pulling on the helmet. The face seal is designed to fit all face sizes comfortably and act as a suspension point to prevent side impacts breaking the seal.

The Communications system is operated by a helmet mounted 'press to- talk' transmission switch. Helmets are supplied with BA



and Comms interfaces to suit your equipment. They are CE Approved with EN 443 /136 and 137 certification.

The helmet shell is available in a range of colours to suit your company profile and a cap lamp is also available as an optional extra.

It is little wonder that the majority of the F1 Grand Prix refuelling crew wear the SOLOunifit helmet and why it has also become the favourite head protection for the majority of the world's cruise ships and Navies.

**SOLOtic**

The totally unique SOLOtic helmet combines full head and face protection with respiratory protection, "hands free" communications and "hands free" vision.



You can identify objects through even the densest smoke by means of a fully integrated thermal imaging camera, which displays the image inside the face mask by augmented reality viewing optics.

The ergonomic design gives clean lines to the outside of the helmet leaving nothing protruding which could catch on hanging debris in a fire situation.

SOLOtic is approved and in use in various applications worldwide.

Images are picked up through the centrally mounted camera and are displayed to the wearer through the augmented viewing lenses.

Tel: +44 (0) 1609 881855

E-mail: sales@gsolo.co.uk

**Intelligent, Competent  
and Reliable -  
The SSD531 Advanced  
Optical Smoke Detector**

Who doesn't dream of a technology which assumes responsibility whilst simultaneously paying attention to its own efficiency and which does not only list all changes in system status, processes and incidents in painstaking detail, but also forwards them reliably too. From now on, Schrack Seconet presents such a technology. The SSD531 Advanced optical smoke detector opens up a new dimension in preventative fire safety, and sets standards, to which traditional products are bound to follow suit.



Once a second 60 times a minute. 3,600 times an hour. 86,400 times a day. Week after week. Month after month. Year after year. That is the SSD531 Advanced optical smoke detector's work cycle. Always on duty! Even when the detector has been temporarily disabled – due perhaps to building work. The detector even offers double intelligence. Based on its 90° scattering angle, and its in-built intelligent decision-making logical processor the detector ensures that smoke particles are detected accurately and that only real alarms are signalled.

The SSD531 Advanced monitors itself constantly and reports even the tiniest of deviation safely and reliably to the fire alarm control panel. From commissioning onwards all detector data and events are compiled and saved in an accurate manner. The short circuit isolator forms a highlight, and every single SSD531 Advanced detector is equipped with this technology.

As a forward-looking high tech product, the SSD531 Advanced can be incorporated in all existing and future alarm systems. Thanks to its individual topological address, the detector always remains easy to find and monitor. The installation process and address assigning process can be carried out quickly. It is also worth mentioning that the SSD531 Advanced also adheres to all EU directives with regard to the use of materials which do not contain harmful materials, thereby offering the highest level of safety with regard to environmental sustainability.

Fax: +43 1 81157 600

E-mail: info@schrack-seconet.com

**MTD 533 -  
The Multiple Sensor  
Detector**

Pioneering companies like Schrack Seconet are always responsible for introducing new technological leaps. This is once again the case with the latest products from the experts in security technology – the MTD 533 multiple sensor detector. The main difference when compared with traditional detectors lies in the intelligent technology contained within the product, which allows it to adapt independently to its surrounding conditions.

Preventive fire safety products must satisfy the highest technological and qualitative requirements. In a domain, which is concerned both with the protection of human life as well as the protection of assets, fire detectors must always guarantee the ability to function smoothly without any difficulties, even in the most challenging conditions. The Schrack MTD 533 multiple sensor detector satisfies these high requirements and its intelligent technology heralds a new era in preventive fire safety. "One for all and all for one!" is the motto of the MTD 533 optothermal fire detector. It removes the question from the mind of the user, whether a smoke detector or a temperature detector should be deployed in the fire detection system.



The MTD 533 is equipped with a smoke detector and a temperature sensor, and therefore richly deserves its tag of being an all-rounder. It either recognises fires by the formation of smoke or based on the increase in temperature. And it is the detector's intelligent decision-making logic processor which guarantees that only cases where there actually is a fire are detected. Harald Kobermann, Product Manager for Fire Alarm Systems at Schrack Seconet explains, "Its excellent scattered light coefficients and its precise sensor technology allow the MTD 533 to detect the formation of smoke at a particularly early juncture. In addition to this instrument, a sensor measures a possible increase in temperature thereby ensuring a double degree of safety – a characteristic which is part and parcel of

Schrack Seconet's entire range of fire safety technology products."

The MTD 533 was conceived in such a way that it can be integrated without any problems into existing and future Integral fire alarm control panels. Existing systems can therefore be upgraded at any time, without the need for major changes to the system. Thanks to a plug and play concept which was developed in-house, the commissioning process for the detector can be carried out approximately three times quicker than for similar products. Even this "high speed" start-up process represents an innovation in fire alarm technology.

In order that the new fire detector can be immediately identified by the other system components, the MTD 533 is assigned an individual detector address using a 2D matrix barcode. Harald Kobermann explains, "The device's unique identification number simplifies any swapping of devices considerably. If an existing fire detector is replaced by another one, then the new product simply assumes the address of its predecessor."

Its intelligent technology and flexibility in deployment make the MTD 533 a partner that no-one can do without in terms of fire safety. The fire detector is therefore able to deliver the highest possible level of protection for people, property and assets.

Fax: +43 1 81157 600

E-mail: [info@schrack-seconet.com](mailto:info@schrack-seconet.com)

**Integral  
Evolution**

**Evolution- The package for  
success.**

The Integral Evolution is entering new frontiers in security technology. It is innovative and deploys the newest technologies. As a result it sets the benchmarks and standards for the future, and will revolutionise preventative fire safety. The Software and Hardware components together form harmonious unit, which no other fire alarm control panel is able to boast. It affords users, specialist staff and the emergency services absolute security and ease of use, since it guarantees rapid use and efficiency. The Integral Evolution is simple to use for the simple reason that it contains the highest possible standard of technology. And it conforms to all national and European standards, such as European Standard EN 54. In many areas it far



exceeds the requirements of this standard. Our commitment to quality does not end, after all, with the demands contained in national standards or guidelines.

**A Multilingual System.**

Extremely simple communication between man and machine.

Progress exists for the good of mankind. Especially as far as security technology is concerned. Systems must be intuitively comprehensible and easy to operate. Our systems therefore include many features which make life easier for you as the user. Nothing can get past this system. Furthermore, all important events can also be queried again at a subsequent point in time. A memory chip which is integrated into the system makes this possible, upon which up to 65,000 individual events can be saved. The high end operating panel with a colour display ensures that there is a clear overview! Centralized monitoring of several buildings and controlling the system from the remotely located company headquarters are also possible, as is a current status report of the fire alarm system from a home PC. The RemoteControl Panel feature which we have developed allows you these opportunities and many more too.

Fax: +43 1 81157 600

E-mail: [info@schrack-seconet.com](mailto:info@schrack-seconet.com)

**intersec**  
MIDDLE EAST

**Dubai International Convention and Exhibition Centre  
January 13th –15th, 2008**

Messe Frankfurt Middle East

Tel: +971 4 338 0102 Fax: +971 4 339 0280

Email: [swarn.kaur@uae.messefrankfurt.com](mailto:swarn.kaur@uae.messefrankfurt.com) Website: [www.intersecexpo.com](http://www.intersecexpo.com)



# EXHIBITIONS & CONFERENCES

## ALGERIA

12th -14th May 2008 - State Homeland Industrial & Personal Security - ALGERIA SECURITY 2008 - Algiers  
Organiser: Trade and Fair Events Cooperative  
Tel: +213 21 795641 Fax: same as telephone

## AUSTRALIA

26th - 28th August 2008 - Security Industry - SECURITY EXPO - Sydney  
Organiser: Diversified Exhibitions Australia  
Tel: +61 3 9261 4500 Fax: +61 3 9261 4545

## ARGENTINA

13th - 15th August 2008 - Safety & Security - SEGURIX-PO BISEC - Buenos Aires  
Organiser: Indexport Messe Frankfurt SA  
Tel: +54 11 4543 1000 Fax: +54 11 4542 6469

## BAHRAIN

9th - 11th December 2008 - Fire Dept Instruction Conference & Exhibition - FDIC BAHRAIN 2008 -  
Organiser: PennWell Corporation  
Tel: +44 (0) 1992 656600 Fax: +44 (0) 1992 656704

## BRAZIL

27th - 29th May 2008 - Security - EXPOSEC 2008 - Sao Paulo  
Organiser: CIPA Group  
Tel: +55 11 5774 355 Fax: +55 11 5774 239

27th - 29th August 2008 - Safety Security Fire - FISP 2008 - Sao Paulo  
Organiser: CIPA Group  
Tel: +55 11 5774 355 Fax: +55 11 5774 239

## CHINA

7th - 9th April 2008 - Explosion Protection Electric Tech & Equipment - EXPEC 2008 - Beijing  
Organiser: Beijing Zhenwei Exhibition Co Ltd  
Tel: +86 10 5823 6566 Fax: +86 10 5823 6567

4th - 6th June 2008 - Security Safety Fire Protection - ASIAN SECURITEX 2008 - Hong Kong  
Organiser: Hong Kong Exhibition Services  
Tel: +852 2804 1500 Fax: +852 2804 1500

## CZECH REPUBLIC

13th - 16th May 2008 - Fire Fighting Equipment Security Technology - PYROS/ISET - Brno  
Organiser: BVV Trade Fairs Brno  
Tel: +420 5 4115 1111 Fax: +420 5 4115 3070

13th - 16th May 2008 - Health & Safety at Work - INTER-PROTEC - Brno  
Organiser: BVV Trade Fairs Brno  
Tel: +420 5 4115 1111 Fax: +420 5 4115 3070

## GERMANY

7th - 10th October 2008 - Security Trade - SECURITY ESSEN - Essen  
Organiser: Messe Essen GmbH  
Tel: +49 201 72440 Fax: +49 201 7244 248

23rd - 25th October 2008 - Rescue & Emergency Modern Equipment - AESCUTEC - Dresden  
Organiser: ORTEC Messe Dresden GmbH  
Tel: +49 351 315330 Fax: +49 351 3153310

## INDIA

18th - 20th January 2008 - Occupational Safety Security & Health - Hyderabad  
Organiser: Hyderabad Int'l Trade Expositions Ltds  
Tel: +91 40 2311 2121 Fax: +91 40 2311 2124

## MALAYSIA

17th - 20th June 2008 - Security & Safety - ISF - Kuala Lumpur  
Organiser: AMB Exhibitions Sdn Bhd  
Tel: +60 3 404 54993 Fax: +60 3 404 54989

17th - 20th June 2008 - Fire Protection & Rescue - FIREC - Kuala Lumpur  
Organiser: AMB Exhibitions Sdn Bhd  
Tel: +60 3 404 54993 Fax: +60 3 404 54989

## MEXICO

22nd - 24th April 2008 - Electronic Security - EXPOSE-GURIDAD MEXICO - Mexico City  
Organiser: Ciprex Mexico SA de CV  
Tel: +52 81 8347 8560 Fax: 8346 2597

## NORWAY

7th - 10th October 2008 - Defence & Security - NIDSEC 2008 - Lillestrom  
Organiser: Argus Exhibitions AS  
Tel: +47 2151 3100 Fax: +47 2151 3100

## PAKISTAN

21st - 24th May 2008 - Fire & Security - Karachi  
Organiser: Pegasus Consultancy Pvt. Ltd  
Tel: +92 21 241853478 Fax: +92 21 2410723

8th - 10th July 2008 - Electronic Security - ITCN SECURITY ASIA - Karachi  
Organiser: Ecommerce Gateway Pakistan (Pvt)  
Tel: +92 21 4536321 Fax: +92 21 4536330

## PHILIPPINES

23rd - 25th October 2008 - Occupational Safety & Health Products - Manila  
Organiser: Global-Link Marketing & Management Services  
Tel: +63 2 7508588 Fax: +63 2 7508585

# EXHIBITIONS & CONFERENCES

## POLAND

22nd - 25th April 2008 - Work Protection Fire Fighting  
Rescue Equipment Trade - SAW0 - Poznan  
Organiser: Poznan International Fair  
Tel: +48 61 692592 Fax: +48 61 665827

22nd - 25th April 2008 - Security - SECUREX - Poznan  
Organiser: Poznan International Fair  
Tel: +48 61 692592 Fax: +48 61 665827

9th - 12th June 2008 - Work Safety in Industry - Poznan  
Organiser: Poznan International Fair  
Tel: +48 61 692592 Fax: +48 61 665827

## QATAR

17th - 19th March 2008 - Maritime Defence - DIMDEX  
2008 - Doha  
Organiser: Qatar MICE Development Institute  
Tel: +974 4823949 Fax: +974 4823691

17th - 19th November 2008 - Internal State Security - MIL-  
LIPOL QATAR - Doha  
Organiser: Expositum  
Tel: +33 1 49685100 Fax: +33 1 49685555

## SOUTH AFRICA

19th - 21st August 2009 - Security Safety & Protection -  
SECUREX GAUTENG - Cape Town  
Organiser: Exhibitions for Africa  
Tel: +27 11 8863734 Fax: +27 11 7896497

## SPAIN

26th - 29th February 2008 - Security Safety Fire Trade -  
SICUR - Madrid  
Organiser: Feria de Madrid  
Tel: +34 91 722 5000 Fax: +34 91 722 5801

## SWEDEN

10th - 12th June 2008 - Defence Training Education &  
Simulation - ITEC 2008 - Stockholm  
Organiser: Reed Exhibitions Deutschland GmbH  
Tel: +49 211 901910 Fax: +49 211 90191123

## UNITED ARAB EMIRATES

13th - 15th January 2008 -  
Fire Safety Rescue & Security -  
INTERSEC MIDDLE EAST- Dubai  
Organiser: Epcoc Messe Frankfurt GmbH  
Tel: 971 4 338 0102 Fax: 338 0041

## UNITED KINGDOM

26th - 27th February 2008 - Health & Safety HEALTH &  
SAFETY SOUTHERN - Esher  
Organiser: Western Business Exhibitions Ltd  
Tel: +44(0) 1342 314300  
Email: ebrennan@western-be.co.uk

11th - 12th March 2008 - Fire Protection & Prevention -  
FIREX SOUTH 2008 - Esher  
Organiser: CMP Information  
Tel: +44 (0) 20 7921 8063 Email: gdunphy@cmpi.biz

11th - 12th April 2008 - Master Locksmiths Association  
Conference & Exhibition - MLA EXPO 2008 - Telford  
Organiser: Master Locksmiths Association  
Tel: +44 (0) 1327 262 255  
Email: enquiries@locksmiths.co.uk

12th - 15th May 2008 - Security Trade -  
IFSEC 2008 - Birmingham  
Organiser: CMPi  
Tel: +44 (0) 20 7921 8159 Email: stanner@cmpi.biz  
13th - 15th May 2008 - Safety & Health - Birmingham  
Organiser: CMPi  
Tel: +44 (0) 20 7921 8159  
Email: stanner@cmpi.biz

21st - 22nd October 2008 - Fire Protection & Prevention -  
FIREX NORTH 2008 - Harrogate  
Organiser: CMP Information  
Tel: +44 (0) 20 7921 8054  
Email: gdunphy@cmpi.biz

## U.S.A.

12th - 13th April 2008 - Gun and Knife Show - Dallas  
Organiser: Dallas Arms Collectors Association  
Tel: +1 972 2555280 Fax: same as telephone

14th - 15th June 2008 - Gun and Knife Show -Dallas  
Organiser: Dallas Arms Collectors Association  
Tel: +1 972 2555280 Fax: same as telephone

20th - 21st September 2008 - Gun and Knife Show - Dallas  
Organiser: Dallas Arms Collectors Association  
Tel: +1 972 2555280 Fax: same as telephone

29th -30th November 2008 - Gun and Knife Show - Dallas  
Organiser: Dallas Arms Collectors Association  
Tel: +1 972 2555280 Fax: same as telephone

## VIETNAM

17th - 19th September 2008 - Security Safety & Fire  
Protection - SECURITEX & FIRE VIETNAM - Ho Chi  
Minh City  
Organiser: Overseas Exhibition Services Ltd  
Tel: +44 (0) 7840 2100 Fax: +44 (0) 7840 2111